

### Features

- Twelve barb sizes
- Ten thread sizes
- Captured O-ring design
- Smaller shank
- Smoother tubing approach angle
- Solderless joint technology
- Larger thru-hole
- Consistently sharp barbs



### Pneu-Edge Features

**Twelve barb sizes** are available to accommodate a variety of tubing requirements.

**Ten thread sizes** are available ranging from 10-32, 1/4-28 and 1/16 NPT to 3/8 NPT, including metric M3, M5 and M6.

Pneumadyne's **captured o-ring design** provides a superior seal ensuring a leak resistant fitting.

A **smaller shank** behind the barb allows Polyurethane tubing to relax, providing a tighter grip and seal.

A **smoother tubing approach angle** eases tubing installation.

**Solderless joint technology** eliminates solder voids, potential leaks and heat discoloration or distortion of materials. Components are threaded together and sealed with NSF approved Loctite® sealant to eliminate pull-out potential and ensure straight barb alignment.

**Larger thru-hole** for a maximized flow path.

Swiss precision machining ensures consistently **sharp barbs** for more permanent tubing installation.

## Pneu-Edge® Fittings

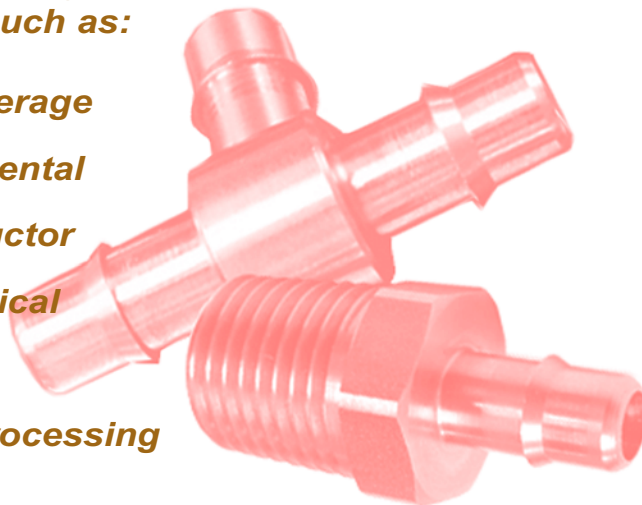
Pneu-Edge fittings feature a consistently sharp, single-barb design which provides a tighter grip and seal than standard multiple barbs. These precision machined fittings ensure permanent polyurethane tubing installation without the need for clamps. Straight connectors, tees, elbows, crosses and couplings are available in a wide variety of sizes and materials to accommodate numerous fluid handling circuits.

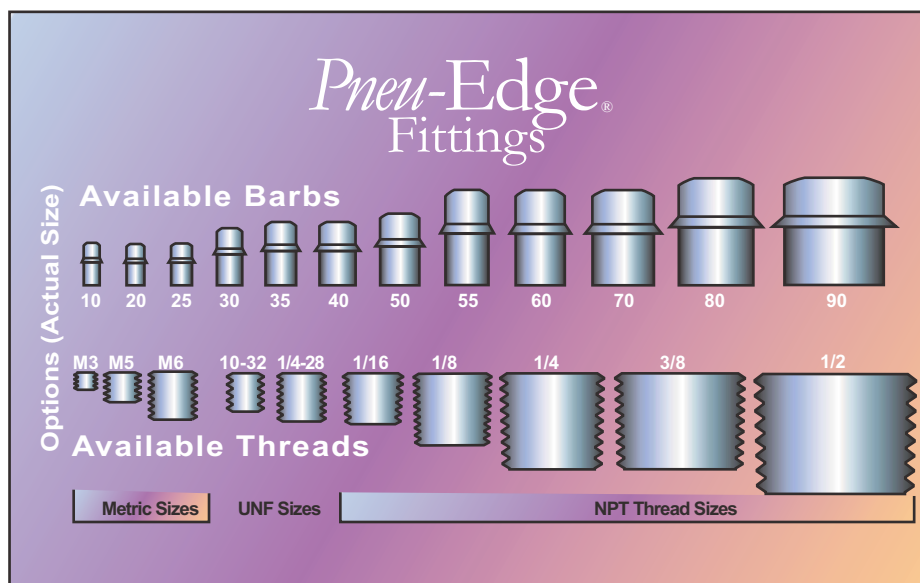
### Materials

Brass/ Electroless Nickel, Buna-N O-rings

**Pneumadyne's Stainless Steel Pneu-Edge® fittings are suitable for use in industries such as:**

- Food & Beverage
- Medical & Dental
- Semi-Conductor
- Pharmaceutical
- Agriculture
- Chemical processing





Pneu-Edge barbs are assigned a two digit code as defined on the Product Number Diagram (lower left). There are twelve barb sizes for use with Polyurethane tubing ranging from 1/16 ID to 1/2 ID. Ten thread sizes include metric, UNF, and NPT.

Pneu-Edge fittings ensure permanent polyurethane tubing installation without the need for clamps. However, we recommend the use of clamps in applications over 80 psi which also involve heat or vibration.

### Product Number Diagram

*Pneu-Edge® Fittings*

**E R C 3 0 - 1 0 - 3 0 3**

#### Product Line

E= Pneu-Edge

#### Fitting Configuration

**Threaded**

A= Adjustable Tee  
 A-LB= Adjustable EL Barb  
 B= Male Connector  
 BK= Bulkhead  
 FB= Female Connector  
 FLB= EL Female Thread  
 FT= Female Tee  
 LB= Elbow  
 RB= Reducer Bushing  
 T= Tee 1/4-28 thru 3/8  
 TB= 10-32 Tee

#### Barb-to-Barb

C= Coupling  
 L= Elbow  
 T= Tee  
 RC= Reducing Coupling  
 RT= Reducing Tee  
 RX= Reducing Cross  
 X= Cross

**Barb Size**- refer to "Connector Options" below for code

#### Connector Options

**Barb Size Code**

Code	Tube ID
10=	1/16
20=	5/64
25=	3/32
30=	1/8
35=	5/32
40=	.170
50=	3/16
55=	7/32
60=	1/4
70=	5/16
80=	3/8

#### Thread Size

"no code"= 10-32 UNF  
 4-28= 1/4-28 UNF  
 1/16= 1/16 NPT  
 1/8= 1/8 NPT  
 1/4= 1/4 NPT  
 3/8= 3/8 NPT  
 1/2= 1/2 NPT  
 M3= M3 x 0.5  
 M5= M5 x 0.8  
 M6= M6 x 1.0

#### Suffix

250= 1/4" Hex  
 303= Stainless Steel  
 S= Short

Please use Part Number Listing to verify part number- not all configurations are possible

#### Note:

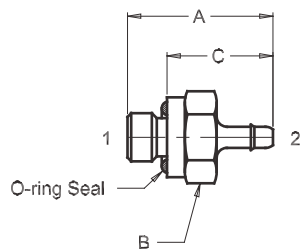
Please refer to drawings for location and size of barbs on reducer fittings-

### Ordering Information

- To order standard Electroless Nickel Brass plated product use part number listing.
- For 303 Stainless Steel add a -303 suffix to the part number- *lead times and minimum quantities may apply.*
- Optional O-rings available- contact factory.
- Standard package quantities:
  - 25 pcs per bag
  - 100 pcs per box

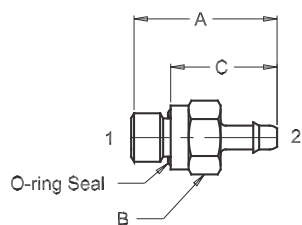
- Flow Rates for Pneu-Edge Fittings can be found on page 188-189

## Straight 10-32



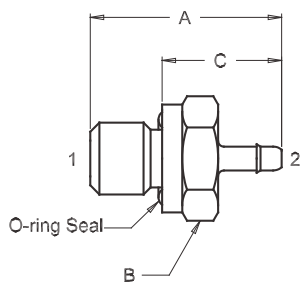
Part Number	A	B Hex	C	1	2 Tubing ID
EB10	0.571	5/16	0.416	10-32 (M)	1/16
EB20	0.571	5/16	0.416	10-32 (M)	5/64
EB25	0.574	5/16	0.419	10-32 (M)	3/32
EB30	0.665	5/16	0.510	10-32 (M)	1/8
EB35	0.689	5/16	0.534	10-32 (M)	5/32
EB40	0.689	5/16	0.534	10-32 (M)	.170
EB50	0.723	5/16	0.568	10-32 (M)	3/16
EB60	0.846	5/16	0.691	10-32 (M)	1/4

## Straight 1/4 Hex



Part Number	A	B Hex	C	1	2 Tubing ID
EB10-250	0.571	1/4	0.416	10-32 (M)	1/16
EB20-250	0.571	1/4	0.416	10-32 (M)	5/64
EB25-250	0.574	1/4	0.419	10-32 (M)	3/32
EB30-250	0.665	1/4	0.510	10-32 (M)	1/8
EB40-250	0.689	1/4	0.534	10-32 (M)	.170

## Straight 1/4-28



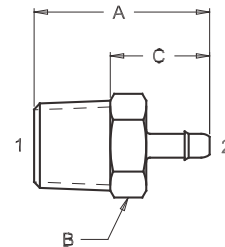
Part Number	A	B Hex	C	1	2 Tubing ID
EB10-4-28	0.666	3/8	0.416	1/4-28 (M)	1/16
EB20-4-28	0.666	3/8	0.416	1/4-28 (M)	5/64
EB25-4-28	0.669	3/8	0.419	1/4-28 (M)	3/32
EB30-4-28	0.760	3/8	0.510	1/4-28 (M)	1/8
EB40-4-28	0.784	3/8	0.534	1/4-28 (M)	.170
EB50-4-28	0.818	3/8	0.568	1/4-28 (M)	3/16
EB60-4-28	0.941	3/8	0.691	1/4-28 (M)	1/4

When design makes a dimension critical- contact factory for confirmation. All dimensions are in inches, unless otherwise specified and are subject to change without notice.

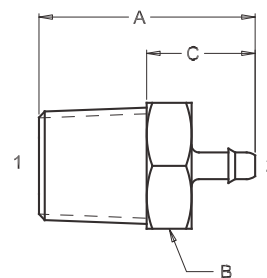


All Pneu-Edge fittings are available in 303 Stainless Steel; add a -303 suffix to the standard part number

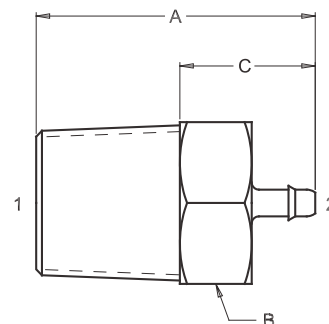
Part Number	A	B Hex	C	1	2 Tubing ID	Straight 1/16 NPT
EB10-1/16	0.611	5/16	0.346	1/16 (M)	1/16	
EB20-1/16	0.611	5/16	0.346	1/16 (M)	5/64	
EB25-1/16	0.614	5/16	0.349	1/16 (M)	3/32	
EB30-1/16	0.705	5/16	0.440	1/16 (M)	1/8	
EB40-1/16	0.729	5/16	0.464	1/16 (M)	.170	
EB50-1/16	0.763	5/16	0.498	1/16 (M)	3/16	
EB60-1/16	0.886	5/16	0.621	1/16 (M)	1/4	



Part Number	A	B Hex	C	1	2 Tubing ID	Straight 1/8 NPT
EB10-1/8	0.752	7/16	0.377	1/8 (M)	1/16	
EB20-1/8	0.752	7/16	0.377	1/8 (M)	5/64	
EB25-1/8	0.755	7/16	0.380	1/8 (M)	3/32	
EB30-1/8	0.846	7/16	0.471	1/8 (M)	1/8	
EB40-1/8	0.870	7/16	0.495	1/8 (M)	.170	
EB50-1/8	0.904	7/16	0.529	1/8 (M)	3/16	
EB60-1/8	1.027	7/16	0.652	1/8 (M)	1/4	
EB70-1/8	1.027	7/16	0.652	1/8 (M)	5/16	
EB80-1/8	1.090	7/16	0.715	1/8 (M)	3/8	

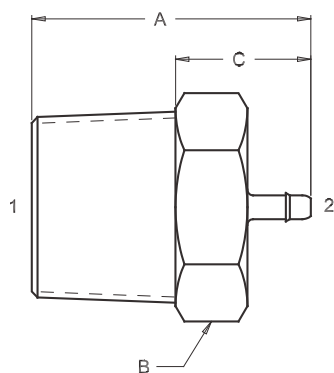


Part Number	A	B Hex	C	1	2 Tubing ID	Straight 1/4 NPT
EB10-1/4	0.971	9/16	0.471	1/4 (M)	1/16	
EB20-1/4	0.971	9/16	0.471	1/4 (M)	5/64	
EB25-1/4	0.974	9/16	0.474	1/4 (M)	3/32	
EB30-1/4	1.065	9/16	0.565	1/4 (M)	1/8	
EB35-1/4	1.089	9/16	0.589	1/4 (M)	5/32	
EB40-1/4	1.089	9/16	0.589	1/4 (M)	.170	
EB50-1/4	1.123	9/16	0.623	1/4 (M)	3/16	
EB60-1/4	1.246	9/16	0.746	1/4 (M)	1/4	
EB70-1/4	1.246	9/16	0.746	1/4 (M)	5/16	
EB80-1/4	1.309	9/16	0.809	1/4 (M)	3/8	



All Pneu-Edge fittings are available in 303 Stainless Steel; add a -303 suffix to the standard part number

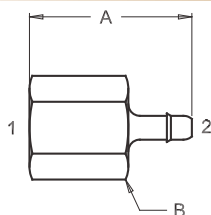
## Straight 3/8 NPT



Part Number	A	B Hex	C	1	2 Tubing ID
EB20-3/8	0.971	11/16	0.471	3/8 (M)	5/64
EB25-3/8	0.974	11/16	0.474	3/8 (M)	3/32
EB30-3/8	1.065	11/16	0.565	3/8 (M)	1/8
EB40-3/8	1.089	11/16	0.589	3/8 (M)	.170
EB60-3/8	1.246	11/16	0.746	3/8 (M)	1/4
EB80-3/8	1.309	11/16	0.809	3/8 (M)	3/8

## Straight 10-32

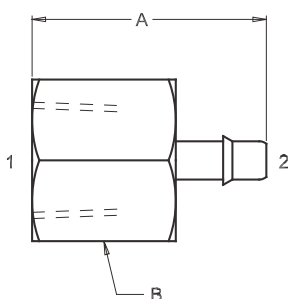
Female



Part Number	A	B Hex	1	2 Tubing ID
EFB10	0.565	1/4	10-32 (F)	1/16
EFB20	0.565	1/4	10-32 (F)	5/64
EFB30	0.659	1/4	10-32 (F)	1/8
EFB40	0.683	1/4	10-32 (F)	.170

## Straight 1/8 NPT

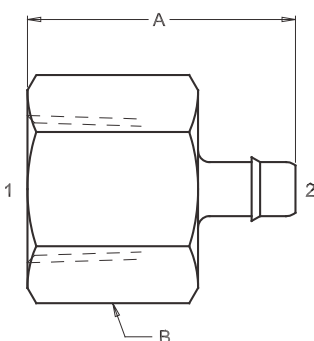
Female



Part Number	A	B Hex	1	2 Tubing ID
EFB10-1/8	0.721	7/16	1/8 (F)	1/16
EFB20-1/8	0.721	7/16	1/8 (F)	5/64
EFB25-1/8	0.724	7/16	1/8 (F)	3/32
EFB30-1/8	0.815	7/16	1/8 (F)	1/8
EFB35-1/8	0.839	7/16	1/8 (F)	5/32
EFB40-1/8	0.873	7/16	1/8 (F)	.170
EFB50-1/8	0.995	7/16	1/8 (F)	3/16
EFB60-1/8	0.995	7/16	1/8 (F)	1/4
EFB80-1/8	1.059	7/16	1/8 (F)	3/8

## Straight 1/4 NPT

Female



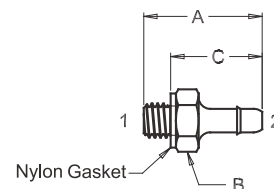
Part Number	A	B Hex	1	2 Tubing ID
EFB10-1/4	0.815	11/16	1/4 (F)	1/16
EFB20-1/4	0.815	11/16	1/4 (F)	5/64
EFB30-1/4	0.909	11/16	1/4 (F)	1/8
EFB40-1/4	0.933	11/16	1/4 (F)	.170
EFB50-1/4	0.967	11/16	1/4 (F)	3/16
EFB60-1/4	1.090	11/16	1/4 (F)	1/4
EFB80-1/4	1.153	11/16	1/4 (F)	3/8



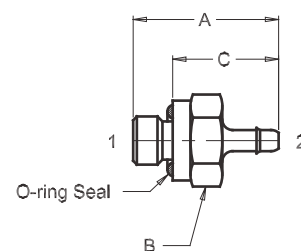
All Pneu-Edge fittings are available in 303 Stainless Steel; add a -303 suffix to the standard part number

Part Number	A	B Hex	C	1	2 Tubing ID	Straight M3
EB10-M3*	0.412	3/16	0.300	M3 (M)	1/16	
EB20-M3	0.412	3/16	0.300	M3 (M)	5/64	
EB25-M3	0.415	3/16	0.303	M3 (M)	3/32	
EB30-M3	0.506	3/16	0.394	M3 (M)	1/8	
EB40-M3	0.536	1/4	0.451	M3 (M)	.170	

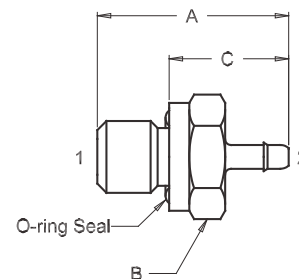
\*Thru hole: 0.047



Part Number	A	B Hex	C	1	2 Tubing ID	Straight M5
EB10-M5	0.571	5/16	0.416	M5 (M)	1/16	
EB20-M5	0.571	5/16	0.416	M5 (M)	5/64	
EB25-M5	0.574	5/16	0.419	M5 (M)	3/32	
EB30-M5	0.665	5/16	0.510	M5 (M)	1/8	
EB40-M5	0.689	5/16	0.534	M5 (M)	.170	



Part Number	A	B Hex	C	1	2 Tubing ID	Straight M6
EB10-M6	0.666	3/8	0.416	M6 (M)	1/16	
EB20-M6	0.666	3/8	0.416	M6 (M)	5/64	
EB25-M6	0.669	3/8	0.419	M6 (M)	3/32	
EB30-M6	0.760	3/8	0.510	M6 (M)	1/8	
EB40-M6	0.784	3/8	0.534	M6 (M)	.170	

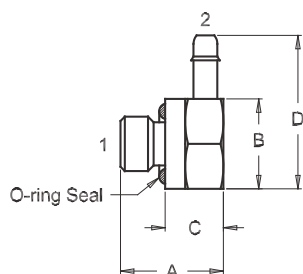


When design makes a dimension critical- contact factory for confirmation. All dimensions are in inches, unless otherwise specified and are subject to change without notice.



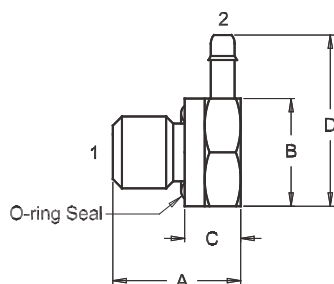
All Pneu-Edge fittings are available in 303 Stainless Steel; add a -303 suffix to the standard part number

## Elbow Fixed 10-32



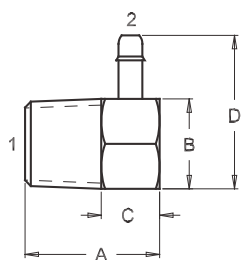
Part Number	A	B Hex	C	D	1	2 Tubing ID
ELB10	0.358	5/16	0.203	0.534	10-32 (M)	1/16
ELB20	0.358	5/16	0.203	0.534	10-32 (M)	5/64
ELB25	0.358	5/16	0.203	0.537	10-32 (M)	3/32
ELB30	0.436	5/16	0.281	0.628	10-32 (M)	1/8
ELB35	0.488	5/16	0.333	0.652	10-32 (M)	5/32
ELB40	0.488	5/16	0.333	0.652	10-32 (M)	.170

## Elbow Fixed 1/4-28



Part Number	A	B Hex	C	D	1	2 Tubing ID
ELB10-4-28	0.445	3/8	0.195	0.596	1/4-28 (M)	1/16
ELB20-4-28	0.445	3/8	0.195	0.596	1/4-28 (M)	5/64
ELB25-4-28	0.445	3/8	0.195	0.599	1/4-28 (M)	3/32
ELB30-4-28	0.523	3/8	0.273	0.690	1/4-28 (M)	1/8
ELB35-4-28	0.575	3/8	0.325	0.714	1/4-28 (M)	5/32
ELB40-4-28	0.575	3/8	0.325	0.714	1/4-28 (M)	.170
ELB50-4-28	0.575	3/8	0.325	0.748	1/4-28 (M)	3/16

## Elbow Fixed 1/16 NPT



Part Number	A	B Hex	C	D	1	2 Tubing ID
ELB10-1/16	0.468	5/16	0.203	0.534	1/16 (M)	1/16
ELB20-1/16	0.468	5/16	0.203	0.534	1/16 (M)	5/64
ELB25-1/16	0.468	5/16	0.203	0.537	1/16 (M)	3/32
ELB30-1/16	0.468	5/16	0.203	0.628	1/16 (M)	1/8
ELB40-1/16	0.531	3/8	0.266	0.714	1/16 (M)	.170
ELB50-1/16	0.531	3/8	0.266	0.748	1/16 (M)	3/16
ELB60-1/16	0.578	3/8	0.313	0.871	1/16 (M)	1/4

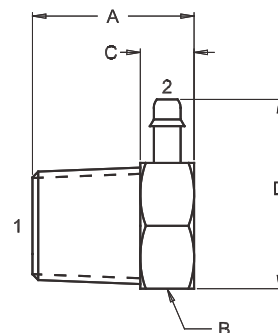


All Pneu-Edge fittings are available in 303 Stainless Steel; add a -303 suffix to the standard part number



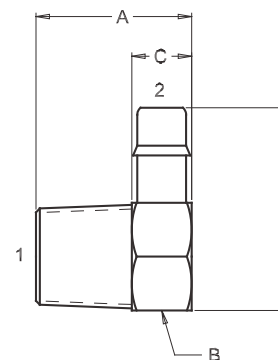
Part Number	A	B Hex	C	D	1	2 Tubing ID
ELB10-1/8	0.625	7/16	0.300	0.659	1/8 (M)	1/16
ELB20-1/8	0.625	7/16	0.300	0.659	1/8 (M)	5/64
ELB25-1/8	0.625	7/16	0.300	0.662	1/8 (M)	3/32
ELB30-1/8	0.625	7/16	0.300	0.753	1/8 (M)	1/8
ELB35-1/8	0.625	7/16	0.300	0.777	1/8 (M)	5/32
ELB40-1/8	0.688	7/16	0.355	0.777	1/8 (M)	.170
ELB50-1/8	0.688	7/16	0.355	0.811	1/8 (M)	3/16
ELB60-1/8	0.688	7/16	0.375	0.934	1/8 (M)	1/4
ELB80-1/8	0.984	5/8	0.609	1.184	1/8 (M)	3/8

## Elbow Fixed 1/8 NPT



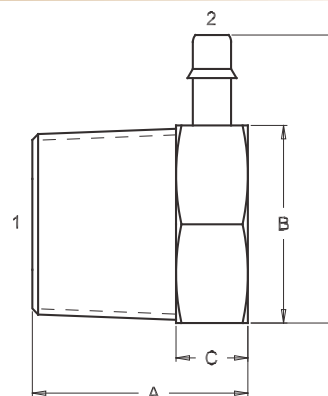
Part Number	A	B Hex	C	D	1	2 Tubing ID
ELB10-1/4	0.750	9/16	0.250	0.784	1/4 (M)	1/16
ELB20-1/4	0.750	9/16	0.250	0.784	1/4 (M)	5/64
ELB25-1/4	0.750	9/16	0.250	0.787	1/4 (M)	3/32
ELB30-1/4	0.750	9/16	0.250	0.878	1/4 (M)	1/8
ELB30-1/4-S	0.583	9/16	0.250	0.878	1/4 (M)	1/8
ELB35-1/4	0.825	9/16	0.325	0.902	1/4 (M)	5/32
ELB40-1/4	0.825	9/16	0.325	0.902	1/4 (M)	.170
ELB40-1/4-S	0.658	9/16	0.325	0.902	1/4 (M)	.170
ELB50-1/4	0.825	9/16	0.325	0.936	1/4 (M)	3/16
ELB60-1/4	0.850	9/16	0.350	1.059	1/4 (M)	1/4
ELB80-1/4	1.109	3/4	0.609	1.309	1/4 (M)	3/8

## Elbow Fixed 1/4 NPT



Part Number	A	B Hex	C	D	1	2 Tubing ID
ELB30-3/8	0.750	11/16	0.250	1.003	3/8 (M)	1/8
ELB40-3/8	0.750	11/16	0.250	1.027	3/8 (M)	.170
ELB50-3/8	0.750	11/16	0.250	1.061	3/8 (M)	3/16
ELB60-3/8	0.813	11/16	0.313	1.184	3/8 (M)	1/4
ELB80-3/8	1.000	11/16	0.500	1.247	3/8 (M)	3/8

## Elbow Fixed 3/8 NPT

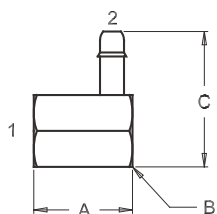


When design makes a dimension critical- contact factory for confirmation. All dimensions are in inches, unless otherwise specified and are subject to change without notice.

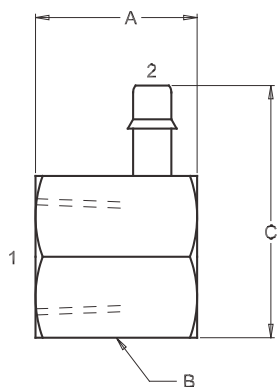


All Pneu-Edge fittings are available in 303 Stainless Steel; add a -303 suffix to the standard part number

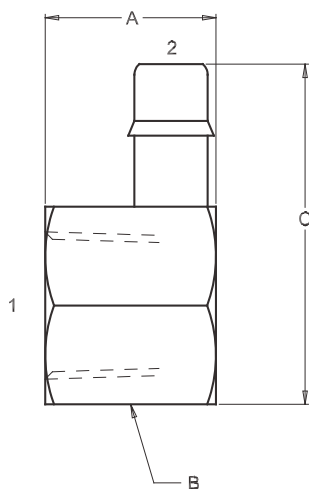


**Elbow Fixed 10-32****Female**

Part Number	A	B Hex	C	1	2 Tubing ID
EFLB10	0.344	1/4	0.471	10-32 (F)	1/16
EFLB20	0.344	1/4	0.471	10-32 (F)	5/64
EFLB10-S	0.281	1/4	0.471	10-32 (F)	1/16
EFLB20-S	0.281	1/4	0.471	10-32 (F)	5/64

**S= Short****Elbow Fixed 1/8 NPT****Female**

Part Number	A	B Hex	C	1	2 Tubing ID
EFLB10-1/8	0.500	9/16	0.784	1/8 (F)	1/16
EFLB20-1/8	0.500	9/16	0.784	1/8 (F)	5/64
EFLB25-1/8	0.500	9/16	0.787	1/8 (F)	3/32
EFLB30-1/8	0.500	9/16	0.878	1/8 (F)	1/8
EFLB35-1/8	0.563	9/16	0.902	1/8 (F)	5/32
EFLB40-1/8	0.563	9/16	0.902	1/8 (F)	.170
EFLB50-1/8	0.563	9/16	0.936	1/8 (F)	3/16
EFLB60-1/8	0.563	9/16	1.059	1/8 (F)	1/4

**Elbow Fixed 1/4 NPT****Female**

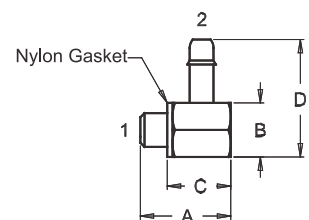
Part Number	A	B Hex	C	1	2 Tubing ID
EFLB10-1/4	0.594	11/16	0.909	1/4 (F)	1/16
EFLB20-1/4	0.594	11/16	0.909	1/4 (F)	5/64
EFLB25-1/4	0.594	11/16	0.912	1/4 (F)	3/32
EFLB30-1/4	0.594	11/16	1.003	1/4 (F)	1/8
EFLB35-1/4	0.594	11/16	1.027	1/4 (F)	5/32
EFLB40-1/4	0.594	11/16	1.027	1/4 (F)	.170
EFLB50-1/4	0.594	11/16	1.061	1/4 (F)	3/16
EFLB60-1/4	0.594	11/16	1.187	1/4 (F)	1/4
EFLB80-1/4	0.938	11/16	1.247	1/4 (F)	3/8



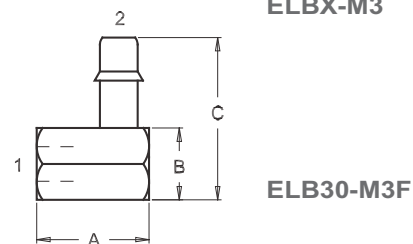
All Pneu-Edge fittings are available in 303 Stainless Steel; add a -303 suffix to the standard part number

Part Number	A	B Hex	C	D	1	2 Tubing ID
ELB10-M3	0.315	3/16	0.223	0.409	M3 (M)	1/16
ELB20-M3	0.315	3/16	0.223	0.409	M3 (M)	5/64
ELB25-M3	0.315	3/16	0.223	0.412	M3 (M)	3/32
ELB30-M3	0.393	5/16	0.301	0.628	M3 (M)	1/8
ELB30-M3F	0.391	1/4	0.565	----	M3 (F)	1/8
ELB40-M3	0.393	5/16	0.301	0.652	M3 (M)	.170

## Elbow Fixed M3



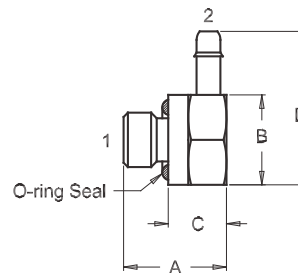
ELBX-M3



ELB30-M3F

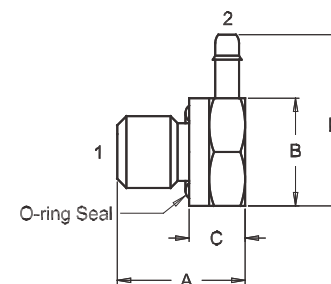
Part Number	A	B Hex	C	D	1	2 Tubing ID
ELB10-M5	0.358	5/16	0.203	0.534	M5 (M)	1/16
ELB20-M5	0.358	5/16	0.203	0.534	M5 (M)	5/64
ELB25-M5	0.358	5/16	0.203	0.537	M5 (M)	3/32
ELB30-M5	0.436	5/16	0.281	0.628	M5 (M)	1/8
ELB40-M5	0.488	5/16	0.333	0.652	M5 (M)	.170

## Elbow Fixed M5



Part Number	A	B Hex	C	D	1	2 Tubing ID
ELB10-M6	0.445	3/8	0.195	0.596	M6 (M)	1/16
ELB20-M6	0.445	3/8	0.195	0.596	M6 (M)	5/64
ELB25-M6	0.445	3/8	0.195	0.599	M6 (M)	3/32
ELB30-M6	0.523	3/8	0.273	0.690	M6 (M)	1/8
ELB35-M6	0.575	3/8	0.325	0.714	M6 (M)	5/32
ELB40-M6	0.575	3/8	0.325	0.714	M6 (M)	.170
ELB50-M6	0.575	3/8	0.325	0.748	M6 (M)	3/16

## Elbow Fixed M6

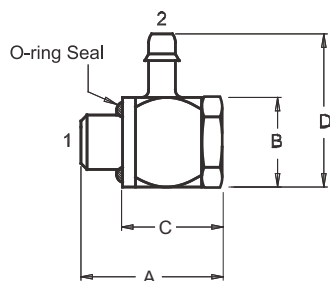


When design makes a dimension critical- contact factory for confirmation. All dimensions are in inches, unless otherwise specified and are subject to change without notice.



All Pneu-Edge fittings are available in 303 Stainless Steel; add a -303 suffix to the standard part number

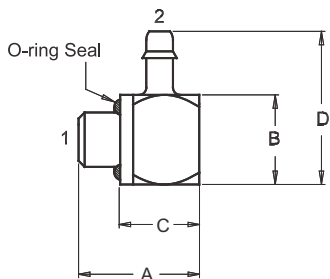
## Elbow Adjustable



Part Number	A	B Square	C	D	1	2 Tubing ID
EA-LB10	0.496	5/16	0.351	0.533	10-32 (M)	1/16
EA-LB20	0.496	5/16	0.351	0.533	10-32 (M)	5/64
EA-LB25	0.496	5/16	0.351	0.536	10-32 (M)	3/32
EA-LB30	0.496	5/16	0.351	0.627	10-32 (M)	1/8
EA-LB40	0.596	5/16	0.424	0.619	10-32 (M)	.170
EA-LB50	0.596	5/16	0.424	0.686	10-32 (M)	3/16

## Elbow Adjustable

## Slotted



Part Number	A	B Square	C	D	1	2 Tubing ID
EA-LB10-SLOT	0.419	5/16	0.275	0.533	10-32 (M)	1/16
EA-LB20-SLOT	0.419	5/16	0.275	0.533	10-32 (M)	5/64
EA-LB25-SLOT	0.419	5/16	0.275	0.536	10-32 (M)	3/32
EA-LB30-SLOT	0.419	5/16	0.275	0.627	10-32 (M)	1/8
EA-LB40-SLOT	0.492	5/16	0.348	0.651	10-32 (M)	.170
EA-LB50-SLOT	0.492	5/16	0.348	0.685	10-32 (M)	3/16

Features a screwdriver slot for fitting alignment



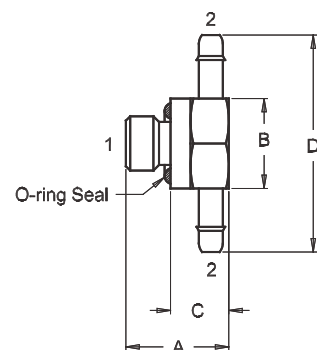
***Pneu-Edge fittings feature a consistently sharp, single-barb design which provides a tighter grip and seal than standard multiple barbs***



All Pneu-Edge fittings are available in 303 Stainless Steel; add a -303 suffix to the standard part number

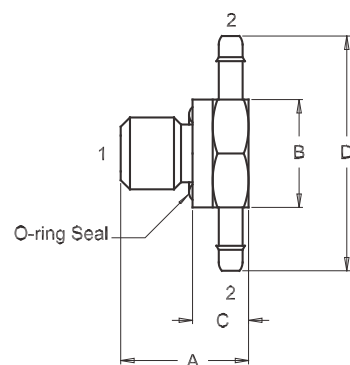
Part Number	A	B Hex	C	D	1	2 Tubing ID
ETB10	0.356	5/16	0.203	0.755	10-32 (M)	1/16
ETB20	0.356	5/16	0.203	0.755	10-32 (M)	5/64
ETB25	0.356	5/16	0.203	0.761	10-32 (M)	3/32
ETB30	0.436	5/16	0.281	0.943	10-32 (M)	1/8
ETB35	0.488	5/16	0.333	0.991	10-32 (M)	5/32
ETB40	0.488	5/16	0.333	0.991	10-32 (M)	.170

## Tee Fixed 10-32



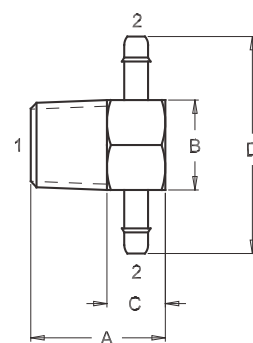
Part Number	A	B Hex	C	D	1	2 Tubing ID
ET10-4-28	0.445	3/8	0.195	0.817	1/4-28 (M)	1/16
ET20-4-28	0.445	3/8	0.195	0.817	1/4-28 (M)	5/64
ET25-4-28	0.445	3/8	0.195	0.823	1/4-28 (M)	3/32
ET30-4-28	0.523	3/8	0.273	1.005	1/4-28 (M)	1/8
ET40-4-28	0.575	3/8	0.325	1.053	1/4-28 (M)	.170
ET50-4-28	0.575	3/8	0.325	1.121	1/4-28 (M)	3/16

## Tee Fixed 1/4-28



Part Number	A	B Hex	C	D	1	2 Tubing ID
ET10-1/16	0.468	5/16	0.203	0.755	1/16 (M)	1/16
ET20-1/16	0.468	5/16	0.203	0.755	1/16 (M)	5/64
ET25-1/16	0.468	5/16	0.203	0.761	1/16 (M)	3/32
ET30-1/16	0.468	5/16	0.203	0.943	1/16 (M)	1/8
ET40-1/16	0.531	3/8	0.266	1.053	1/16 (M)	.170
ET50-1/16	0.531	3/8	0.266	1.121	1/16 (M)	3/16

## Tee Fixed 1/16 NPT

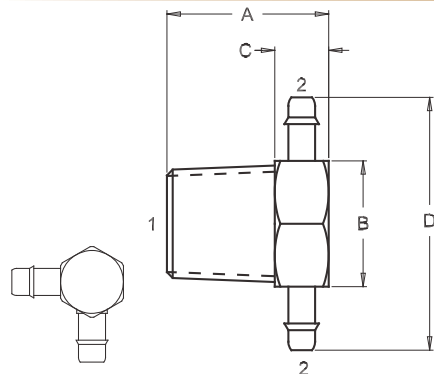


When design makes a dimension critical- contact factory for confirmation. All dimensions are in inches, unless otherwise specified and are subject to change without notice.



All Pneu-Edge fittings are available in 303 Stainless Steel; add a -303 suffix to the standard part number

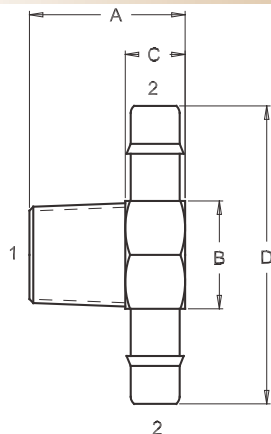
## Tee Fixed 1/8 NPT



ET40-1/8-90

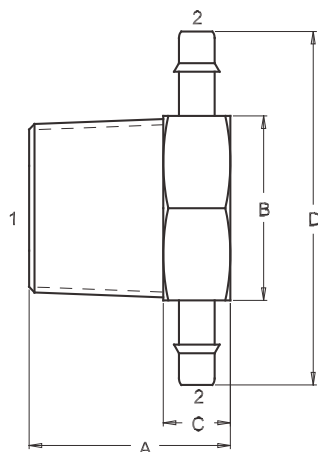
Part Number	A	B Hex	C	D	1	2 Tubing ID
ET10-1/8	0.563	7/16	0.188	0.880	1/8 (M)	1/16
ET20-1/8	0.563	7/16	0.188	0.880	1/8 (M)	5/64
ET25-1/8	0.563	7/16	0.188	0.886	1/8 (M)	3/32
ET30-1/8	0.563	7/16	0.188	1.068	1/8 (M)	1/8
ET40-1/8	0.625	7/16	0.250	1.116	1/8 (M)	.170
ET40-1/8-90	0.625	7/16	0.250	1.116	1/8 (M)	.170
ET50-1/8	0.625	7/16	0.250	1.184	1/8 (M)	3/16
ET60-1/8	0.688	7/16	0.313	1.430	1/8 (M)	1/4
ET80-1/8	0.984	3/4	0.609	1.743	1/8 (M)	3/8

## Tee Fixed 1/4 NPT



Part Number	A	B Hex	C	D	1	2 Tubing ID
ET10-1/4	0.750	9/16	0.250	1.005	1/4 (M)	1/16
ET20-1/4	0.750	9/16	0.250	1.005	1/4 (M)	5/64
ET25-1/4	0.750	9/16	0.250	1.011	1/4 (M)	3/32
ET30-1/4	0.750	9/16	0.250	1.193	1/4 (M)	1/8
ET40-1/4	0.825	9/16	0.325	1.241	1/4 (M)	.170
ET50-1/4	0.825	9/16	0.325	1.309	1/4 (M)	3/16
ET60-1/4	0.850	9/16	0.350	1.555	1/4 (M)	1/4
ET80-1/4	1.109	3/4	0.609	1.868	1/4 (M)	3/8

## Tee Fixed 3/8 NPT



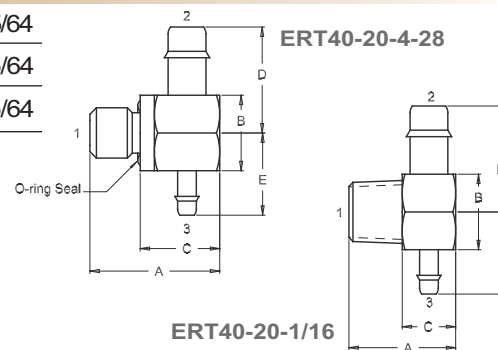
Part Number	A	B Hex	C	D	1	2 Tubing ID
ET30-3/8	0.750	11/16	0.250	1.318	3/8 (M)	1/8
ET40-3/8	0.750	11/16	0.250	1.366	3/8 (M)	.170
ET50-3/8	0.750	11/16	0.250	1.434	3/8 (M)	3/16
ET60-3/8	0.813	11/16	0.313	1.680	3/8 (M)	1/4
ET80-3/8	1.000	11/16	0.500	1.806	3/8 (M)	3/8



All Pneu-Edge fittings are available in 303 Stainless Steel; add a -303 suffix to the standard part number

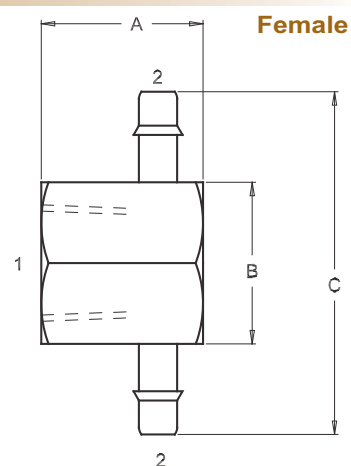
Part Number	A	B Hex	C	D	E	1	2 Tubing ID	3
ERT40-20-4-28	0.575	3/8	0.325	0.527	0.409	1/4-28 (M)	.170	5/64
ERT40-20-1/16	0.531	3/8	0.266	0.527	0.409	1/16 (M)	.170	5/64
ERT40-20-1/4	0.825	9/16	0.325	0.621	0.503	1/4 (M)	.170	5/64

## Tee Fixed Reducing



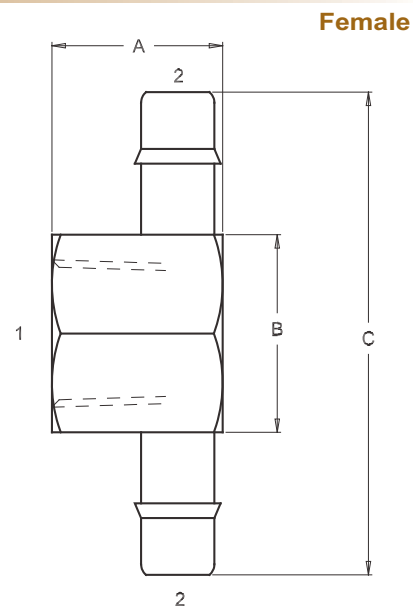
Part Number	A	B Hex	C	1	2 Tubing ID
EFT10-1/8	0.500	9/16	1.005	1/8 (F)	1/16
EFT20-1/8	0.500	9/16	1.011	1/8 (F)	5/64
EFT30-1/8	0.500	9/16	1.193	1/8 (F)	1/8
EFT40-1/8	0.563	9/16	1.241	1/8 (F)	.170
EFT50-1/8	0.563	9/16	1.309	1/8 (F)	3/16
EFT60-1/8	0.563	9/16	1.561	1/8 (F)	1/4

## Tee Fixed 1/8 NPT



Part Number	A	B Hex	C	1	2 Tubing ID
EFT10-1/4	0.594	11/16	1.130	1/4 (F)	1/16
EFT20-1/4	0.594	11/16	1.130	1/4 (F)	5/64
EFT25-1/4	0.594	11/16	1.136	1/4 (F)	3/32
EFT30-1/4	0.594	11/16	1.318	1/4 (F)	1/8
EFT40-1/4	0.594	11/16	1.366	1/4 (F)	.170
EFT50-1/4	0.594	11/16	1.434	1/4 (F)	3/16
EFT60-1/4	0.594	11/16	1.686	1/4 (F)	1/4
EFT80-1/4	0.938	11/16	1.806	1/4 (F)	3/8

## Tee Fixed 1/4 NPT

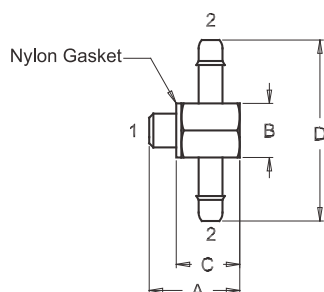


When design makes a dimension critical- contact factory for confirmation. All dimensions are in inches, unless otherwise specified and are subject to change without notice.



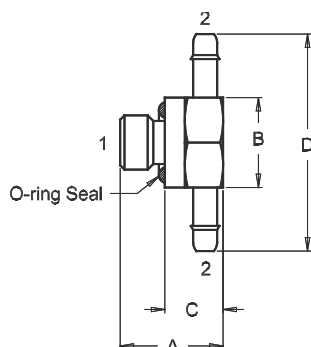
All Pneu-Edge fittings are available in 303 Stainless Steel; add a -303 suffix to the standard part number

## Tee Fixed M3



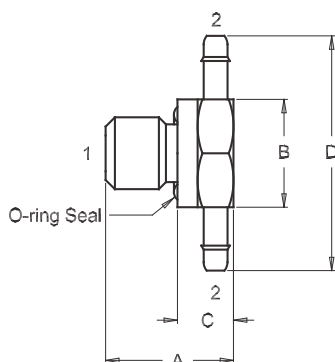
Part Number	A	B Hex	C	D	1	2 Tubing ID
ET10-M3	0.315	3/16	0.223	0.630	M3 (M)	1/16
ET20-M3	0.315	3/16	0.223	0.630	M3 (M)	5/64
ET25-M3	0.315	3/16	0.223	0.636	M3 (M)	3/32
ET30-M3	0.393	5/16	0.393	0.943	M3 (M)	1/8
ET40-M3	0.393	5/16	0.393	0.991	M3 (M)	.170

## Tee Fixed M5



Part Number	A	B Hex	C	D	1	2 Tubing ID
ET10-M5	0.356	5/16	0.203	0.755	M5 (M)	1/16
ET20-M5	0.356	5/16	0.203	0.755	M5 (M)	5/64
ET25-M5	0.356	5/16	0.203	0.761	M5 (M)	3/32
ET30-M5	0.436	5/16	0.281	0.943	M5 (M)	1/8
ET40-M5	0.488	5/16	0.333	0.991	M5 (M)	.170

## Tee Fixed M6



Part Number	A	B Hex	C	D	1	2 Tubing ID
ET10-M6	0.445	3/8	0.195	0.817	M6 (M)	1/16
ET20-M6	0.445	3/8	0.195	0.817	M6 (M)	5/64
ET25-M6	0.445	3/8	0.195	0.823	M6 (M)	3/32
ET30-M6	0.523	3/8	0.273	1.005	M6 (M)	1/8
ET35-M6	0.575	3/8	0.325	1.053	M6 (M)	5/32
ET40-M6	0.575	3/8	0.325	1.053	M6 (M)	.170
ET50-M6	0.575	3/8	0.325	1.121	M6 (M)	3/16

When design makes a dimension critical- contact factory for confirmation. All dimensions are in inches, unless otherwise specified and are subject to change without notice.

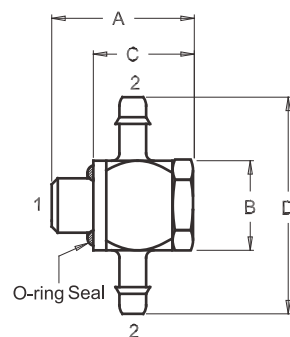


All Pneu-Edge fittings are available in 303 Stainless Steel; add a -303 suffix to the standard part number



Part Number	A	B Square	C	D	1	2 Tubing ID
EA-T10	0.496	5/16	0.351	0.754	10-32 (M)	1/16
EA-T20	0.496	5/16	0.351	0.754	10-32 (M)	5/64
EA-T25	0.496	5/16	0.351	0.760	10-32 (M)	3/32
EA-T30	0.496	5/16	0.351	0.942	10-32 (M)	1/8
EA-T40	0.596	5/16	0.424	0.991	10-32 (M)	.170
EA-T50	0.596	5/16	0.424	1.059	10-32 (M)	3/16

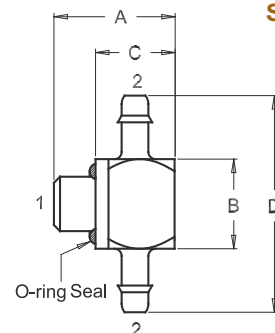
## Tee Adjustable 10-32



Part Number	A	B Square	C	D	1	2 Tubing ID
EA-T10-SLOT	0.419	5/16	0.275	0.754	10-32 (M)	1/16
EA-T20-SLOT	0.419	5/16	0.275	0.754	10-32 (M)	5/64
EA-T25-SLOT	0.419	5/16	0.275	0.760	10-32 (M)	3/32
EA-T30-SLOT	0.419	5/16	0.275	0.942	10-32 (M)	1/8
EA-T40-SLOT	0.492	5/16	0.348	0.990	10-32 (M)	.170
EA-T50-SLOT	0.492	5/16	0.348	1.058	10-32 (M)	3/16

## Tee Adjustable 10-32

Slotted



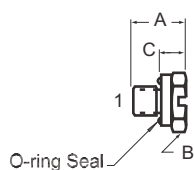
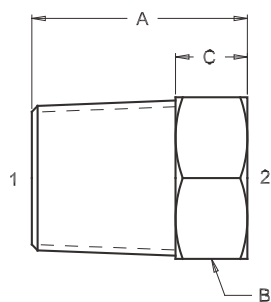
Features a screwdriver slot for fitting alignment

**Swiss precision machining ensures consistently sharp barbs for more permanent tubing installation**



All Pneu-Edge fittings are available in 303 Stainless Steel; add a -303 suffix to the standard part number

## Plugs



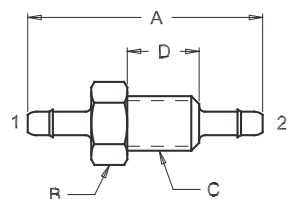
Part Number	A	B Hex	C	1
SPG-1/16	0.390	5/16	0.125	1/16 (M)
SPG-1/8	0.531	7/16	0.156	1/8 (M)
SPG-1/4	0.750	9/16	0.250	1/4 (M)
SPG-3/8	0.750	11/16	0.250	3/8 (M)
SPG-1/2	0.875	7/8	0.250	1/2 (M)

## Slotted

SPG-4-28	0.445	3/8	0.195	1/4-28 (M)
SPG-10	0.310	5/16	0.160	10-32 (M)
SPG-10-1/4	0.310	1/4	0.160	10-32 (M)
SPG-M3*	0.191	3/16	0.099	M3 (M)
SPG-M5	0.310	5/16	0.195	M5 (M)
SPG-M6	0.445	3/8	0.195	M6 (M)

\* Nylon Gasket

## Bulkheads



Part Number	A	B Hex	C	D	1 Tubing ID	2 Tubing ID
EBK-10	0.817	1/4	10-32 (M)	0.250	1/16	1/16
EBK-20	0.817	1/4	10-32 (M)	0.250	5/64	5/64
EBK-25	0.823	1/4	10-32 (M)	0.250	3/32	3/32
EBK-30-4-28	1.068	5/16	1/4-28 (M)	0.313	1/8	1/8
EBK-40-20	0.935	1/4	10-32 (M)	0.250	.170	5/64
EBK-40-25	0.938	1/4	10-32 (M)	0.250	.170	3/32
EBK-40-5/16	1.209	3/8	5/16-24 (M)	0.406	.170	.170
EBK-60-3/8	1.523	1/2	3/8-24 (M)	0.406	1/4	1/4
EBK-60-1/8	1.523	1/2	*1/8 (M)	0.375	1/4	1/4

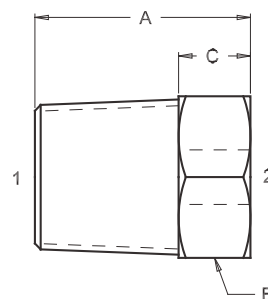
**Note:** Locking nut included

\*NPT pipe thread: locking nut not included

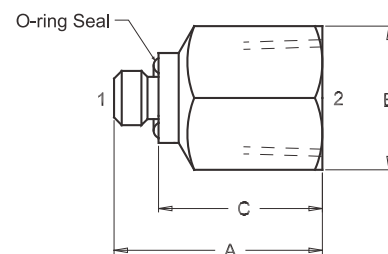
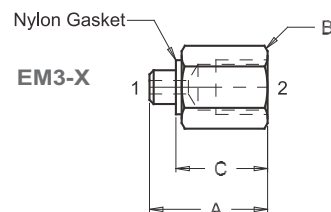


All Pneu-Edge fittings are available in 303 Stainless Steel; add a -303 suffix to the standard part number

Part Number	A	B Hex	C	1	2	Bushings Reducer
ERB1/4-10	0.750	9/16	0.250	1/4 (M)	10-32 (F)	
26	0.680	9/16	0.180	1/4 (M)	10-32 (F)	
ERB1/4-1/16	0.750	9/16	0.250	1/4 (M)	1/16 (F)	
ERB1/4-1/8	0.750	9/16	0.250	1/4 (M)	1/8 (F)	
25	0.530	7/16	0.160	1/8 (M)	10-32 (F)	
ERB1/8-1/16	0.531	7/16	0.156	1/8 (M)	1/16 (F)	
27	0.410	3/8	0.140	1/16 (M)	10-32 (F)	
ERB4-28-10	0.531	5/16	0.281	1/4-28 (M)	10-32 (F)	



Part Number	A	B Hex	C	1	2	Adapters
EM3-10	0.411	1/4	0.299	M3 (M)	10-32 (F)	
EM3-M6	0.501	5/16	0.389	M3 (M)	M6 (F)	
EM5-10	0.565	5/16	0.720	M5 (M)	10-32 (F)	
EM5-1/8	0.725	1/2	0.570	M5 (M)	1/8 (F)	
EM6-1/8	0.820	1/2	0.570	M6 (M)	1/8 (F)	
EM6-M6	0.750	3/8	0.500	M6 (M)	M6 (F)	
E10-1/8	0.724	1/2	0.500	10-32 (M)	1/8 (F)	
E1/8-1/4	0.969	11/16	0.594	1/8 (M)	1/4 (F)	



**Pneumadyne's Pneu-Edge® fittings ensure a lasting tubing connection and leak-proof fit**

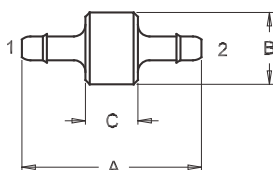
When design makes a dimension critical- contact factory for confirmation. All dimensions are in inches, unless otherwise specified and are subject to change without notice.



All Pneu-Edge fittings are available in 303 Stainless Steel; add a -303 suffix to the standard part number

## Barb-to-Barb

## Couplings

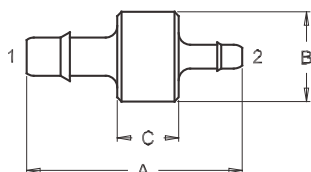


Part Number	A	B Diam.	C	1 Tubing ID	2
EC10	0.625	1/4	0.183	1/16	1/16
EC20	0.625	1/4	0.183	5/64	5/64
EC20-SL	0.500	5/32	0.058	5/64	5/64
EC25	0.641	5/16	0.193	3/32	3/32
EC30	0.884	5/16	0.214	1/8	1/8
EC35	0.879	5/16	0.214	5/32	5/32
EC40	0.938	5/16	0.245	.170	.170
EC50	1.000	3/8	0.254	3/16	3/16
EC60	1.313	7/16	0.321	1/4	1/4
EC70	1.313	7/16	0.321	5/16	5/16
EC80	1.283	7/16	0.120	3/8	3/8

**Note:** SL= Slim Line

## Barb-to-Barb

## Couplings



Part Number	A	B Diam.	C	1 Tubing ID	2
ERC20-10	0.625	1/4	0.183	5/64	1/16
ERC30-10	0.750	5/16	0.214	1/8	1/16
ERC30-20	0.750	5/16	0.214	1/8	5/64
ERC30-25	0.753	5/16	0.214	1/8	3/32
ERC40-10	0.820	5/16	0.245	.170	1/16
ERC40-20	0.820	5/16	0.245	.170	5/64
ERC40-25	0.823	5/16	0.245	.170	3/32
ERC40-30	0.914	5/16	0.245	.170	1/8
ERC50-30	0.942	3/8	0.254	3/16	1/8
ERC50-35	0.966	3/8	0.254	3/16	5/32
ERC60-20	1.038	7/16	0.348	1/4	5/64
ERC60-30	1.132	7/16	0.348	1/4	1/8
ERC60-40	1.156	7/16	0.348	1/4	.170
ERC80-60	1.175	7/16	0.120	3/8	1/4



All Pneu-Edge fittings are available in 303 Stainless Steel; add a -303 suffix to the standard part number

When design makes a dimension critical- contact factory for confirmation. All dimensions are in inches, unless otherwise specified and are subject to change without notice.



All Pneu-Edge fittings are available in 303 Stainless Steel; add a -303 suffix to the standard part number

## About Us

Pneumadyne, Inc. is a leading manufacturer of pneumatic components and pneumatic control systems. Designed and manufactured in the USA, our directional control valves, fittings, manifolds, air nozzles and custom products are relied upon for fluid control throughout a wide-variety of industries.

We have the fluid power expertise, design experience and manufacturing capabilities necessary to support your fluid handling applications. Whether you need standard or custom pneumatic products, you can rely on us for innovative, quality solutions that meet your expectations.



**Pneumadyne**

- Pneumatic control valves
- Solenoid valves
- Fittings
- Manifolds
- Tubing & Accessories
- Custom requirements welcome

[www.pneumadyne.com](http://www.pneumadyne.com) (763) 559-0177

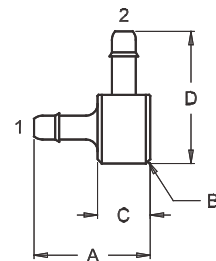
**PNEUMADYNE** ISO 9001

Providing system solutions for fluid control

Part Number	A	B Diam.	C	D	1 Tubing ID	2
EL10	0.404	1/4	0.183	0.460	1/16	1/16
EL20	0.404	1/4	0.183	0.460	5/64	5/64
EL30	0.529	5/16	0.214	0.604	1/8	1/8
EL40	0.599	5/16	0.260	0.628	.170	.170
EL60	0.817	7/16	0.321	0.892	1/4	1/4
EL80	1.059	5/8	0.500	1.094	3/8	3/8

### Barb-to-Barb

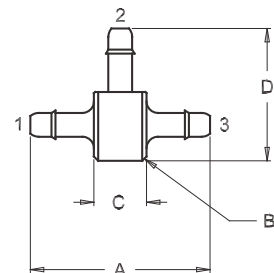
#### Elbows



Part Number	A	B Diam.	C	D	1, 2, 3 Tubing ID
ET10	0.625	1/4	0.183	0.460	1/16
ET20	0.625	1/4	0.183	0.460	5/64
ET25	0.631	1/4	0.183	0.451	3/32
ET30	0.844	5/16	0.214	0.604	1/8
ET35	0.938	5/16	0.260	0.628	5/32
ET40	0.938	5/16	0.260	0.628	.170
ET50	1.000	3/8	0.254	0.714	3/16
ET60	1.313	7/16	0.321	0.892	1/4
ET70	1.492	5/8	0.500	1.031	5/16
ET80	1.618	5/8	0.500	1.094	3/8

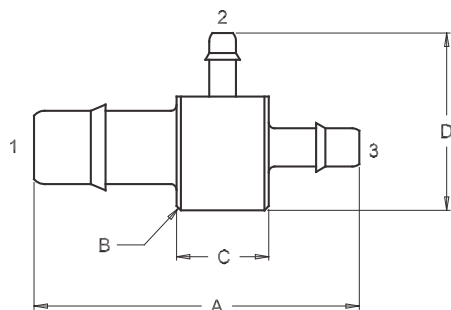
### Barb-to-Barb

#### Tees



## Barb-to-Barb

## Tees- Reducing



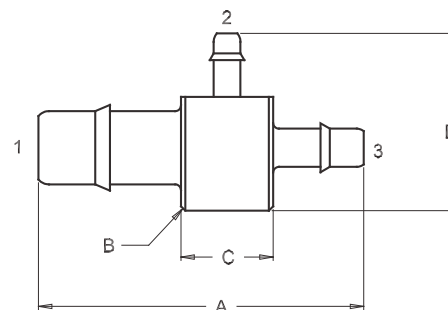
Straight connectors, tees, elbows, crosses and couplings are available in a wide variety of sizes and materials to accommodate numerous fluid handling circuits.

Part Number	A	B Diam.	C	D	1 Tubing ID	2 Tubing ID	3 Tubing ID
ERT10-30-10	0.625	1/4	0.183	0.554	1/16	1/8	1/16
ERT20-10-20	0.625	1/4	0.183	0.460	5/64	1/16	5/64
ERT30-10-10	0.750	5/16	0.214	0.510	1/8	1/16	1/16
ERT30-30-10	0.750	5/16	0.214	0.604	1/8	1/8	1/16
ERT30-20-20	0.750	5/16	0.214	0.510	1/8	5/64	5/64
ERT30-10-30	0.844	5/16	0.214	0.510	1/8	1/16	1/8
ERT30-20-30	0.844	5/16	0.214	0.510	1/8	5/64	1/8
ERT30-25-30	0.844	5/16	0.214	0.513	1/8	3/32	1/8
ERT30-40-30	0.890	5/16	0.260	0.628	1/8	.170	1/8
ERT40-10-40	0.892	5/16	0.214	0.510	.170	1/16	.170
ERT40-20-40	0.892	5/16	0.214	0.510	.170	5/64	.170
ERT40-30-30	0.868	5/16	0.214	0.604	.170	1/8	1/8
ERT40-30-40	0.892	5/16	0.214	0.604	.170	1/8	.170
ERT40-40-20	0.820	5/16	0.260	0.628	.170	.170	5/64
ERT40-40-30	0.914	5/16	0.260	0.628	.170	.170	1/8
ERT50-20-50	1.000	3/8	0.254	0.562	3/16	5/64	3/16
ERT50-30-50	1.000	3/8	0.254	0.656	3/16	1/8	3/16



All Pneu-Edge fittings are available in 303 Stainless Steel; add a -303 suffix to the standard part number

Part Number	A	B Diam.	C	D	1 Tubing ID	2 Tubing ID	3 Tubing ID	Barb-to-Barb Tees- Reducing
ERT60-20-60	1.313	7/16	0.321	0.617	1/4	5/64	1/4	
ERT60-30-60	1.313	7/16	0.321	0.711	1/4	1/8	1/4	
ERT60-40-60	1.313	7/16	0.321	0.735	1/4	.170	1/4	
ERT60-60-30	1.132	7/16	0.321	0.892	1/4	1/4	1/8	
ERT60-60-40	1.156	7/16	0.321	0.892	1/4	1/4	.170	
ERT60-30-30	1.132	7/16	0.321	0.711	1/4	1/8	1/8	
ERT60-30-20	1.038	7/16	0.321	0.711	1/4	1/8	5/64	
ERT60-20-30	1.132	7/16	0.321	0.617	1/4	5/64	1/8	
ERT60-30-40	1.156	7/16	0.321	0.711	1/4	1/8	.170	
ERT60-40-30	1.132	7/16	0.321	0.735	1/4	.170	1/8	
ERT60-80-60	1.455	5/8	0.500	1.094	1/4	3/8	1/4	
ERT80-20-80	1.618	5/8	0.500	0.756	3/8	5/64	3/8	
ERT80-30-80	1.618	5/8	0.500	0.850	3/8	1/8	3/8	
ERT80-60-80	1.618	5/8	0.500	1.031	3/8	1/4	3/8	



Manufacturing quality is ensured through strict process control of CNC equipment - from our "high tech" 5-axis Swiss screw machines to our basic 2-axis lathes. Employing the most sophisticated techniques available, such as 24-hour "lights out" machining, increases our ability to provide custom products and fulfill low volume orders, setting us apart in the miniature pneumatics industry.

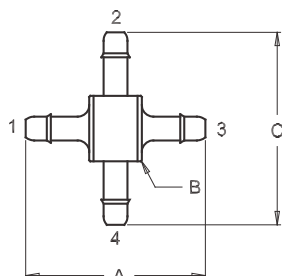


All Pneu-Edge fittings are available in 303 Stainless Steel; add a -303 suffix to the standard part number



## Barb-to-Barb

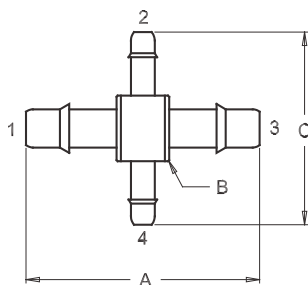
## Crosses



Part Number	A	B Diam.	C	1, 2, 3, 4 Tubing ID
EX10	0.625	1/4	0.670	1/16
EX20	0.625	1/4	0.670	5/64
EX25	0.662	5/16	0.714	3/32
EX30	0.844	5/16	0.896	1/8
EX40	0.938	5/16	0.944	.170
EX50	1.000	3/8	1.052	3/16
EX60	1.313	7/16	1.346	1/4
EX80	1.618	5/8	1.562	3/8

## Barb-to-Barb

## Crosses- Reducing



Part Number	A	B Diam.	C	1 Tubing ID	2 Tubing ID	3 Tubing ID	4 Tubing ID
ERX30-10-10-10	0.750	5/16	0.708	1/8	1/16	1/16	1/16
ERX30-10-30-10	0.844	5/16	0.708	1/8	1/16	1/8	1/16
ERX30-20-30-20	0.844	5/16	0.708	1/8	5/64	1/8	5/64
ERX40-20-40-20	0.892	5/16	0.708	.170	5/64	.170	5/64
ERX40-40-20-40	0.820	5/16	0.944	.170	.170	5/64	.170
ERX80-40-80-40	1.618	5/8	1.122	3/8	.170	3/8	.170

When design makes a dimension critical- contact factory for confirmation. All dimensions are in inches, unless otherwise specified and are subject to change without notice.



All Pneu-Edge fittings are available in 303 Stainless Steel; add a -303 suffix to the standard part number



## Features

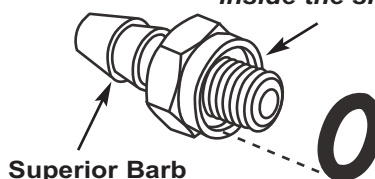
- Reliability of a metal-to-metal mechanical fit
- Captured O-ring for superior seal
- Precision machined barb design
- Electroless Nickel plated

## O-ring Seal Fittings

The O-ring fitting design was perfected by Pneumadyne engineers in the early 1980's. This unique fitting created a standard for industry and today numerous competitors have attempted to replicate our design. The Pneumadyne O-ring fitting was designed with the superior static sealing qualities of an O-ring plus the reliability of a metal-to-metal mechanical fit.

When properly installed the skirt around the O-ring allows the fitting to mechanically seat on the rim of the female thread and hold the fitting tight. The high quality Buna-N O-ring is captured inside the skirt of the fitting, concealing it from view and providing a clean looking connection. The result is superior sealing power- the Buna-N O-ring is not pinched but rather compressed within the fitting skirt which ensures a leakproof fit even when mated with a less than perfect sealing surface. When torqued down the mechanical fit keeps the fittings tight and retains its position even under constant vibration.

*"high quality Buna-N  
O-ring is captured  
inside the skirt"*



## Materials

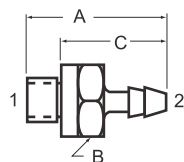
Brass, Electroless Nickel, Stainless Steel 303,  
Buna-N O-Rings (standard) optional seals available -contact factory

**Custom designs are welcome**

## Ordering Information

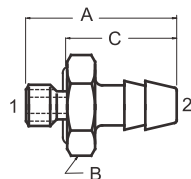
- To order standard product use part number listing.
- For 303 Stainless Steel add a -SS suffix to the part number - *lead times may apply.*
- Optional O-rings available - contact factory.
- Standard package quantities:
  - 25 pcs per bag
  - 100 pcs per box

## Straight Connector



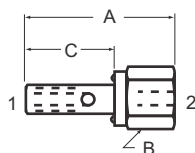
Part Number	A	B Hex	C	1	2 Tubing ID
SBF-062	.60	5/16	.44	10-32 (M)	1/16
SBF-062-LP	.49	5/16	.33	10-32 (M)	1/16
SBF-062-1/4	.59	1/4	.44	10-32 (M)	1/16
SBF-110	.58	5/16	.42	10-32 (M)	5/64
SBF-110-1/4	.58	1/4	.42	10-32 (M)	5/64
SBF-140	.66	5/16	.50	10-32 (M)	1/8
SBF-140-1/4	.66	1/4	.50	10-32 (M)	1/8
SBF-170	.72	5/16	.56	10-32 (M)	.170
SBF-170-1/4	.72	1/4	.56	10-32 (M)	.170

## Straight M3



Part Number	A	B Hex	C	1	2 Tubing ID
SBF-062-1/4-M3	.45	1/4	.33	M3	1/16
SBF-110-1/4-M3	.45	1/4	.31	M3	5/64

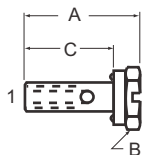
## Stud Manifold



Part Number	A	B Hex	C	1	2
SFD-10	.85	5/16	.51	10-32 (M)	10-32 (F)

## Stud

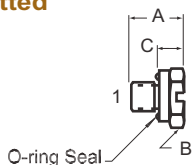
## Slotted



Part Number	A	B Hex	C	1
STD-10	.67	5/16	.51	10-32 (M)

## Plug

## Slotted

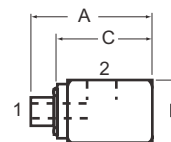


Part Number	A	B Hex	C	1
SPG-10	.31	5/16	.16	10-32 (M)
SPG-10-1/4	.31	1/4	.16	10-32 (M)

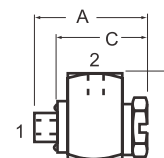


All O-ring fittings are available in 303 Stainless Steel; add a -SS suffix to the standard part number

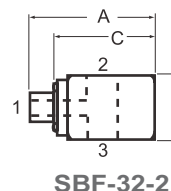
Part Number	A	B Square	C	1	2	Elbow Fixed
SBF-32-1	.61	3/8	.45	10-32 (M)	10-32 (F)	



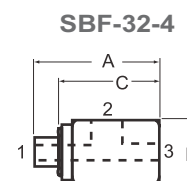
Part Number	A	B	C	1	2	Hex	Elbow Adjustable
STL-10	.67	.50	.54	10-32 (M)	10-32 (F)	5/16	
STL-10-SS	.67	.50	.54	10-32 (M)	10-32 (F)	5/16	



Part Number	A	B Square	C	1	2	3	Tee Fixed
SBF-32-2	.61	3/8 sq	.45	10-32 (M)	10-32 (F)	10-32 (F)	
SBF-32-4	.72	3/8 sq	.57	10-32 (M)	10-32 (F)	10-32(F)	

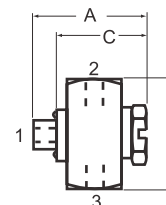


SBF-32-2

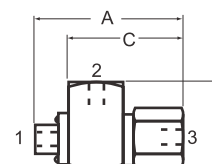


SBF-32-4

Part Number	A	B	C	1	2, 3	Hex	Tee Adjustable
STT-10	.67	.63	.54	10-32 (M)	10-32 (F)	5/16	
STT-10-SS	.67	.63	.54	10-32 (M)	10-32 (F)	5/16	

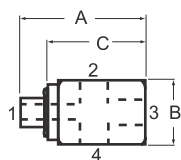


Part Number	A	B	C	1	2, 3	Hex	Run Tee Adjustable
SFL-10	.85	.50	.72	10-32 (M)	10-32 (F)	5/16	



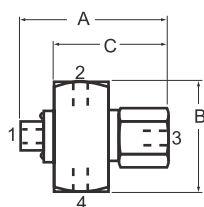
All O-ring fittings are available in 303 Stainless Steel; add a -SS suffix to the standard part number

## Cross Fixed



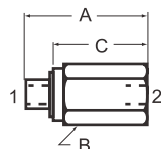
Part Number	A	B Square	C	1	2,3,4
SBF-32-3	.72	3/8	.57	10-32 (M)	10-32 (F)

## Cross Adjustable



Part Number	A	B	C	1	2, 3,4	Hex
SFT-10	.85	.63	.72	10-32 (M)	10-32 (F)	5/16

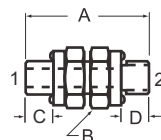
## Adapter



Part Number	A	B Hex	C	1	2
SSP-10	.72	5/16	.56	10-32 (M)	10-32 (F)

## Nipple

## Universal Adjustable



Part Number	A	B Hex	C adjst	D fixed	1, 2
SFU-22	.72	5/16	.185	.16	10-32 (M)

C = adjustable nut tightened to fixed nut

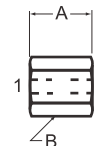
All dimensions and specifications are subject to change without notice



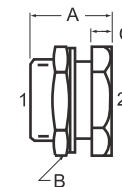
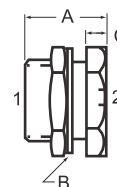
All O-ring fittings are available in 303 Stainless Steel; add a -SS suffix to the standard part number

Part Number	A	B	1, 2 thru	Coupling
*22	.38	1/4	10-32 (F)	
SF-22	.38	5/16	10-32 (F)	

\*Standard product is brass, contact factory for Electroless Nickel finish

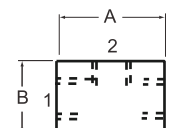


Part Number	A	B	C	1	2	Bulkhead
SBH-10	.45	9/16	.11	15/32-32 x10-32 (F)	10-32 (F)	
SBH-125	.45	9/16	.11	15/32-32 x10-32 (F)	1/8 (F)	



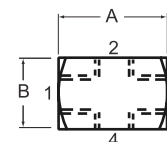
Part Number	A	B Square	1	2	3	Tee
02-3	.562	3/8	10-32 (F)	10-32 (F)	10-32(F)	Female

\*Standard product is brass, contact factory for Electroless Nickel finish



Part Number	A	B Square	1	2, 3, 4	Cross
02-4	.56	3/8	10-32 (F)	10-32 (F)	Female

\*Standard product is brass, contact factory for Electroless Nickel finish



All O-ring fittings are available in 303 Stainless Steel; add a -SS suffix to the standard part number

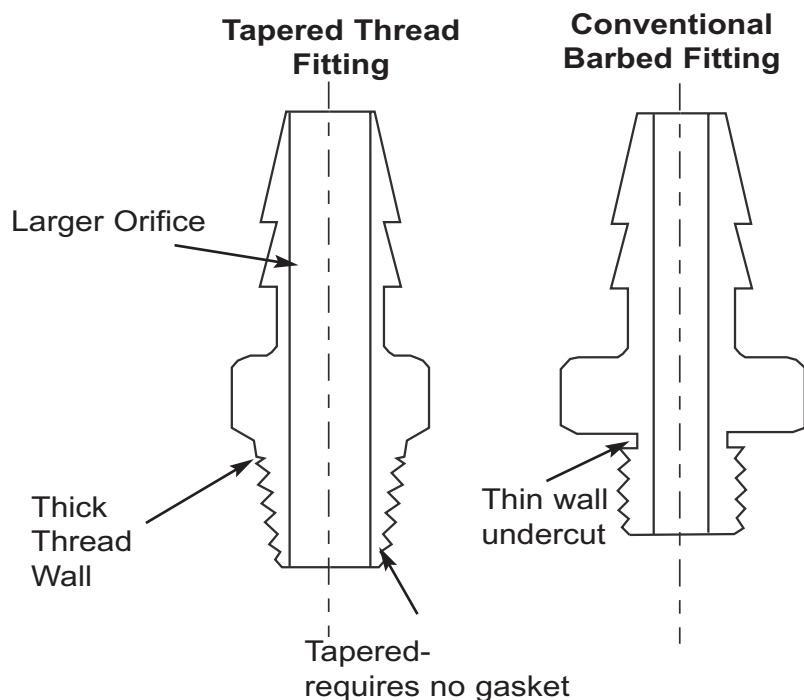
### Features

- Tapered thread  
*No gasket required*
- Larger orifice
- Thick thread wall
- Precision machined barbs
- Brass



## Tapered Thread Fittings

Engineers at Pneumadyne pioneered the 10-32 tapered thread design and have incorporated it in a 10-32 fitting. This unique design eliminates the need for a soft seal undercut at the base of the fitting and produces a seal similar to pipe thread. The absence of the undercut also allows for a larger than normal hole permitting more flow. Tapered threads are sturdier than thin walled 10-32 fittings and can be used in conventional straight female threads as well.



***Tape or Thread Sealant recommended***

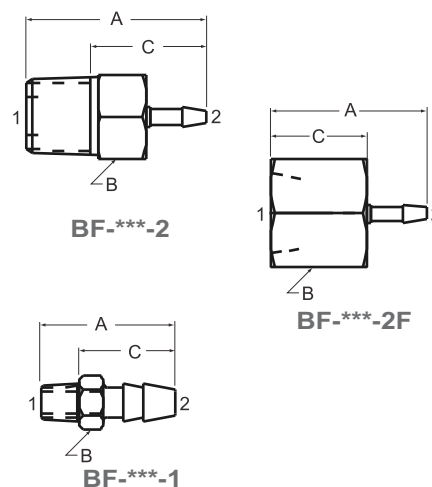
***Custom Designs are Welcome***

### Ordering Information

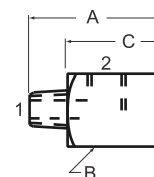
- To order standard brass product use part number listing.
- All tapered thread fittings are available in brass as standard; For **Electroless Nickel** add an "N" as a last digit to the standard part number.
- Standard package quantities:
  - 25 pcs per bag
  - 100 pcs per box



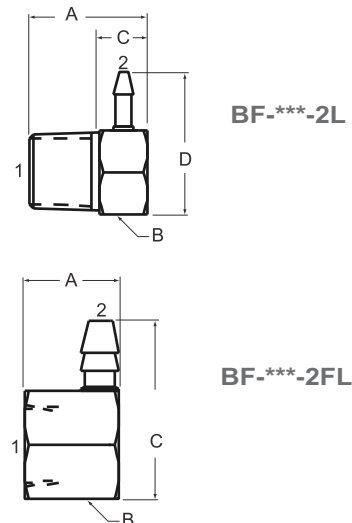
Part Number	A	B Hex	C	1	2 Tubing ID	Straight Connector
BF-062	.57	1/4	.370	10-32 (M)	1/16	
BF-062-2	.94	7/16	.565	1/8 (M)	1/16	
BF-062-2F	.75	1/2	.815	1/8 (F)	1/16	
BF-110-2	.88	7/16	.510	1/8 (M)	5/64	
BF-140	.70	1/4	.500	10-32 (M)	1/8	
BF-170-1	.70	1/4	.500	10-32 (M)	.170	
BF-170-2	.90	7/16	.530	1/8 (M)	.170	
BF-170-2F	.88	1/2	.875	1/8 (F)	.170	



Part Number	A	B Square	C	1	2	Elbow Fixed
32-1	.70	3/8	.50	10-32 (M)	10-32 (F)	

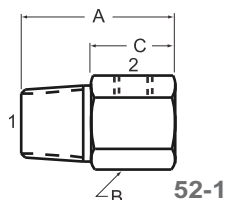
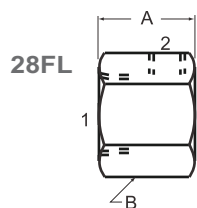


Part Number	A	B Hex	C	D	1	2 Tubing ID	Elbow Tapered to Barb
BF-062-2FL	.50	9/16	.50	-	1/8 (F)	1/16	
BF-062-2L	.62	7/16	.25	.752	1/8 (M)	1/16	
BF-110-2L	.62	7/16	.25	.936	1/8 (M)	5/64	
BF-140-2L	.625	7/16	.25	.815	1/8 (M)	1/8	
BF-170-2FL	.50	9/16	.50	-	1/8 (F)	.170	
BF-170-2L	.62	7/16	.25	.938	1/8 (M)	.170	



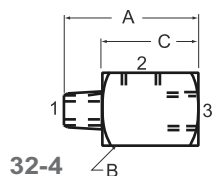
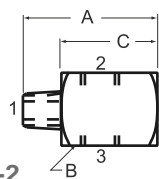
All dimensions and specifications are subject to change without notice

## Elbow Reducing



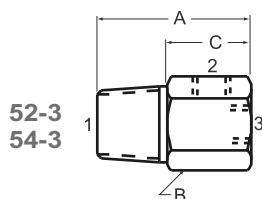
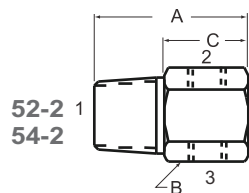
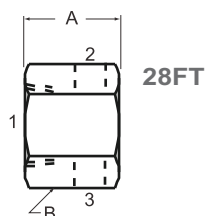
Part Number	A	B Hex	C	1	2
28FL	.50	9/16	-	1/8 (F)	10-32 (F)
29L	.85	11/16	.48	3/8 (M)	10-32 (F)
52-1	.81	7/16	.44	1/8 (M)	10-32 (F)
54-1	.87	9/16	.37	1/4 (M)	10-32 (F)

## Tee



Part Number	A	B Square	C	1	2	3
32-2	.70	3/8	.50	10-32 (M)	10-32 (F)	10-32 (F)
32-4	.70	3/8	.50	10-32 (M)	10-32 (F)	10-32 (F)

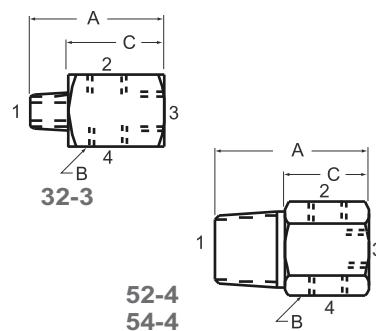
## Tee Reducing



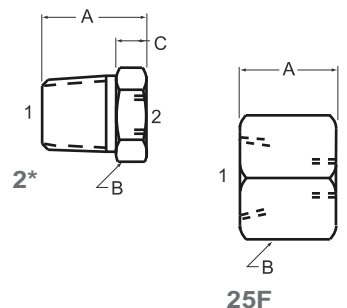
Part Number	A	B Hex	C	1	2	3
28FT	.50	9/16	-	1/8 (F)	10-32 (F)	10-32 (F)
52-2	.81	7/16	.44	1/8 (M)	10-32 (F)	10-32 (F)
52-3	.90	7/16	.53	1/8 (M)	10-32 (F)	10-32 (F)
54-2	.87	9/16	.37	1/4 (M)	10-32 (F)	10-32 (F)
54-3	.87	9/16	.37	1/4 (M)	10-32 (F)	10-32 (F)

All dimensions and specifications are subject to change without notice

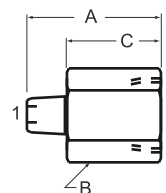
Part Number	A	B	C	1	2, 3, 4	Crosses
32-3	.70	3/8 Square	.50	10-32 (M)	10-32 (F)	
52-4	.90	7/16 Hex	.53	1/8 (M)	10-32 (F)	
54-4	.87	9/16 Hex	.37	1/4 (M)	10-32 (F)	



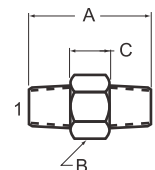
Part Number	A	B Hex	C	1	2	Reducer Bushing
25	.53	7/16	.16	1/8 (M)	10-32 (F)	
25F	.50	7/16	.50	1/8 (F)	10-32 (F)	
26	.68	9/16	.18	1/4 (M)	10-32 (F)	
27	.41	3/8	.14	1/16 (M)	10-32 (F)	



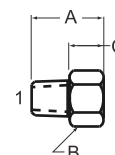
Part Number	A	B Hex	C	1	2	Adapters
34	.70	7/16	.50	10-32 (M)	1/8 (F)	
34A	.75	7/16	.50	1/16 (M)	1/8 (F)	



Part Number	A	B Hex	C	1, 2	Nipple
33	.56	1/4	.16	10-32 (M)	



Part Number	A	B Hex	C	1	Plug
30	.37	1/4	.17	10-32 (M)	



All dimensions and specifications are subject to change without notice

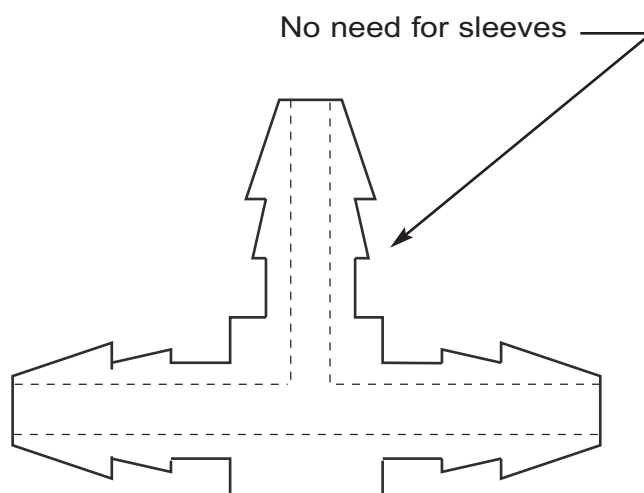
### Features

- Precision machined for 1/8", 5/32", 1/4" tubing
- Eliminates the need for sleeves
- Electroless Nickel plated



## Barb-to-Barb Fittings

Pneumadyne's Barb-to-Barb fittings are high quality, durable brass barbs with the sharpness required to maintain connection even in high pressure and vibration applications. The electroless nickel plated barbed fittings are offered in a variety of sizes and configurations.



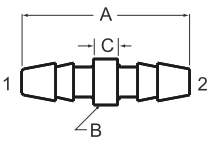
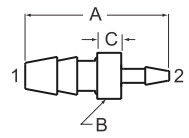
Electroless Nickel plated for corrosion resistance

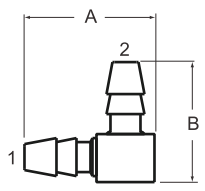
***We design custom products to meet your application needs.***

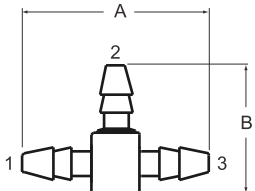
- Please refer to [Fitting Specifications and Flow Rate information](#)

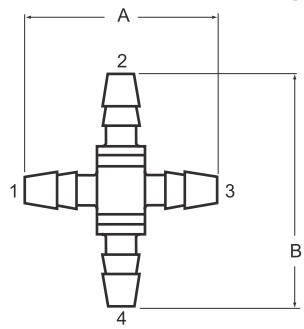
### Ordering Information

- To order standard product use part number listing.
- Standard package quantities:
  - 25 pcs per bag
  - 100 pcs per box

Part Number	A	B Diam.	C	1 Tubing ID	2 Tubing ID	Barb-to-Barb Couplings
SBF-1616	.63	.125	.125	1/16	1/16	 
SBF-1810	.73	.25	.125	.170	5/64	
SBF-1816	.75	.25	.125	.170	1/16	
SBF-1818	.88	.25	.125	.170	.170	

Part Number	A	B	1 Tubing ID	2 Tubing ID	Barb-to-Barb Elbow
SBF-18L	.78	.63	.170	.170	

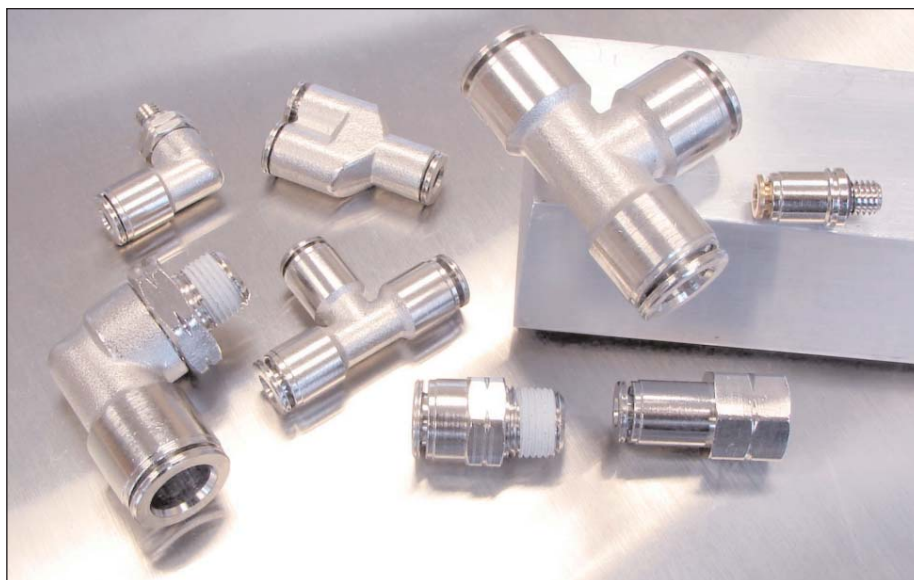
Part Number	A	B	1 Tubing ID	2 Tubing ID	3 Tubing ID	Barb-to-Barb Tee
SBF-10T	.72	.78	5/64	5/64	5/64	
SBF-14T	.876	.721	1/8	1/8	1/8	
SBF-1410T	.87	.64	1/8	5/64	1/8	
SBF-16T	.79	.47	1/16	1/16	1/16	
SBF-18T	1.00	.78	.170	.170	.170	
SBF-1810T	1.00	.64	.170	5/64	.170	
SBF-1816T	1.00	.66	.170	1/16	.170	

Part Number	A	B	1,3 Tubing ID	2,4 Tubing ID	Barb-to-Barb Cross
SBF-18X	1.00	1.21	.170	.170	

All dimensions and specifications are subject to change without notice

### Features

- 1/8 to 3/8 tube OD
- Electroless nickel plated brass and 316 stainless steel
- Several sizes and configurations
- Swivel elbows and tees
- Metal release buttons
- O-ring seal (10-32 UNF fittings only)



## Pneumadyne's Push-to-Connect Fittings

Pneumadyne's new Push-to-Connect fittings enable quick tubing connection and disconnection. A variety of male and female connectors, elbows and tees feature tube ODs ranging from 1/8 to 3/8 and 10-32, 1/8 NPT or 1/4 NPT threads. To ensure a leakproof fit, thread sealant is standard on all male pipe threads and the 10-32 UNF thread features an o-ring for a superior seal.

The 316L stainless steel fittings are suitable for applications in corrosive environments where brass and Acetal are typically prohibited. FPM seals ensure that these fittings can also withstand high temperatures (working temperature is dependent upon tubing).

Tubing connection and tightness are made possible by the presence of a stainless steel gripping collet and an O-ring inside the fitting. Once the

tube is inserted to the bottom of the fitting, the stainless steel collet grips the tube and prevents it from being released. The tubing is disconnected by simply pushing the metal release button and removing the tube from the fitting.

### Materials

Brass: Electroless Nickel Plated Brass, Acetal Resin, Stainless Steel, NBR

Stainless Steel: 316L Stainless Steel, 301 Stainless Steel, FPM/FKM

### Tubing Recommendation Chart

Fitting Material	Tubing Material
Brass	95A Durometer Polyurethane
Stainless Steel	PTFE, PVDF

***Pneumadyne's Stainless Steel Fittings are suitable for use in industries such as:***

- ***Food & Beverage***
- ***Medical & Dental***
- ***Semi-Conductor***
- ***Pharmaceutical***
- ***Agriculture***
- ***Chemical processing***

## PUSH-TO-CONNECT FITTINGS



For limited space applications, the male straight connector features an inner hex allowing for easy installation.



Multiple configurations ease fitting installation.

### Product Number Diagram

*Push-to-Connect Fittings*

**P B 1 5 6 - 1 / 8 - 3 1 6**

#### Fitting Configuration

PB= Male Connector  
PFB= Female Connector  
PFLS= EL Female  
PLS=EL Swivel  
PTS= Tee Swivel  
PT= Union Tee  
PY= Union Y

#### Tube OD

125= 1/8  
156= 5/32  
250= 1/4  
312= 5/16  
375= 3/8

#### Thread Size

1032= 10-32 UNF  
1/8= 1/8 NPT  
1/4= 1/4 NPT

#### Suffix

316= Stainless Steel

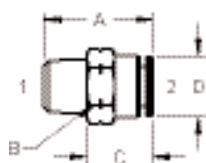
Please use Part Number Listing to verify part number- not all configurations are possible

### Ordering Information

- To order standard product use part number listing.
- For 316 Stainless Steel add a -316 suffix to the part number.
- Standard package quantities:  
-5 pcs per bag, Electroless Nickel Brass  
-1 pc per bag, 316L SS



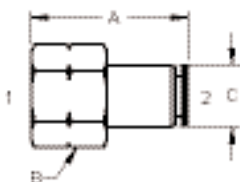
## Straight Connector



Part Number	A	B Hex	C	D	1	2 Tubing OD
PB125-1032	0.649	5/16	0.453	0.275	10-32 (M)	1/8
PB125-1/8	0.728	7/16	0.394	0.275	1/8 (M)	1/8
PB156-1032	0.767	3/8	0.571	0.354	10-32 (M)	5/32
PB156-1/8	0.748	7/16	0.414	0.354	1/8 (M)	5/32
PB250-1032	0.925	3/32	.728	.472	10-32 (M)	1/4
PB250-1/8	0.846	1/2	0.512	0.472	1/8 (M)	1/4
PB375-1/8	1.082	11/16	0.748	0.629	1/8 (M)	3/8

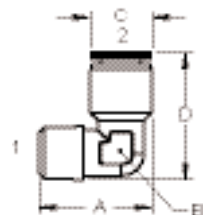
## Straight Connector

Female



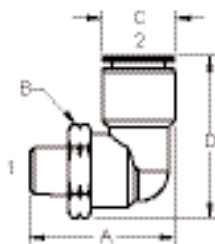
Part Number	A	B Hex	C	D	1	2 Tubing OD
PFB156-1/8	0.964	9/16	0.354		1/8 (F)	5/32
PFB250-1/8	1.043	9/16	0.472		1/8 (F)	1/4
PFB250-1/4	1.220	11/16	0.472		1/4 (F)	1/4

## Elbow Fixed



Part Number	A	B Flats	C	D	1	2 Tubing OD
PLB156-1/8	0.787	0.314	0.354	0.877	1/8 (M)	5/32
PLB250-1/8	0.865	0.393	0.472	0.995	1/8 (M)	1/4
PLB312-1/8	0.945	0.472	0.551	1.054	1/8 (M)	5/16

## Elbow Swivel



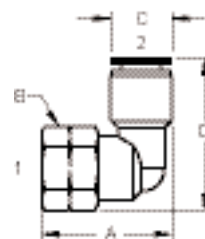
Part Number	A	B Hex	C	D	1	2 Tubing OD
PLS125-1/8	0.866	7/16	0.275	0.823	1/8 (M)	1/8
PLS156-1032	0.826	3/8	0.354	0.886	10-32 (M)	5/32
PLS156-1/8	0.905	7/16	0.354	0.922	1/8 (M)	5/32
PLS250-1/8	1.062	1/2	0.472	1.135	1/8 (M)	1/4
PLS375-1/8	1.259	11/16	0.629	1.381	1/8 (M)	3/8

When design makes a dimension critical- contact factory for confirmation. All dimensions are in inches, unless otherwise specified and are subject to change without notice.

Part Number	A	B Hex	C	D	1	2 Tubing OD
PFLS156-1/8	0.944	9/16	0.354	1.073	1/8 (F)	5/32
PFLS250-1/8	1.003	9/16	0.472	1.171	1/8 (F)	1/4
PFLS312-1/8	1.043	9/16	0.551	1.191	1/8 (F)	5/16

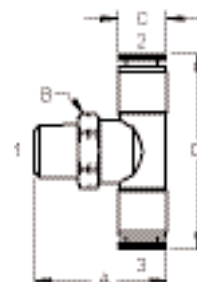
## Elbow Swivel

Female



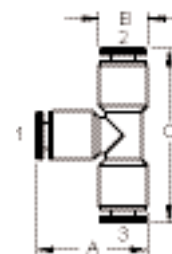
Part Number	A	B Hex	C	D	1	2,3 Tubing OD
PTS156-1/8	1.003	1/2	0.354	1.496	1/8 (M)	5/32
PTS250-1/8	1.062	1/2	0.472	1.692	1/8 (M)	1/4

## Tee Swivel



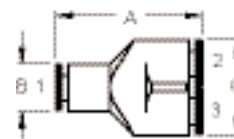
Part Number	A	B	C	1, 2, 3 Tubing OD
PT156	0.846	0.354	1.338	5/32
PT250	1.023	0.472	1.574	1/4
PT312	1.122	0.551	1.692	5/16

## Tee Union



Part Number	A	B	C	1, 2, 3 Tubing OD
PY156	1.122	0.354	0.728	5/32

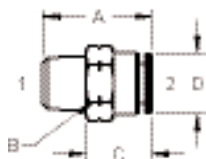
## Union Y



When design makes a dimension critical- contact factory for confirmation. All dimensions are in inches, unless otherwise specified and are subject to change without notice.

## Straight Connector

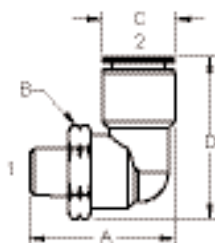
## 316L Stainless Steel



Part Number	A	B Hex (mm)	C	D	1	2 Tubing OD
PB156-1/8-316	0.748	11	0.414	0.354	1/8 (M)	5/32
PB250-1/8-316	0.846	13	0.512	0.472	1/8 (M)	1/4

## Elbow Swivel

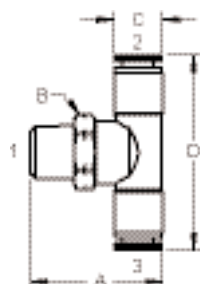
## 316L Stainless Steel



Part Number	A	B Hex (mm)	C	D	1	2 Tubing OD
PLS156-1/8-316	0.905	11	0.354	0.922	1/8 (M)	5/32
PLS250-1/8-316	1.062	13	0.472	1.135	1/8 (M)	1/4

## Tee Swivel

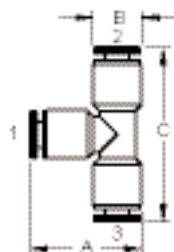
## 316L Stainless Steel



Part Number	A	B Hex (mm)	C	D	1	2, 3 Tubing OD
PTS156-1/8-316	1.003	11	0.354	1.496	1/8 (M)	5/32
PTS250-1/8-316	1.062	13	0.472	1.692	1/8 (M)	1/4

## Tee Union

## 316L Stainless Steel



Part Number	A	B	C	1, 2, 3 Tubing OD
PT156-316	0.846	0.354	1.338	5/32
PT250-316	1.023	0.472	1.574	1/4
PT312-316	1.122	0.551	1.692	5/16

When design makes a dimension critical- contact factory for confirmation. All dimensions are in inches, unless otherwise specified and are subject to change without notice.

**FPM seals withstand high temperatures- SS Fittings only**  
(working temperature is dependent upon tubing)



### Features

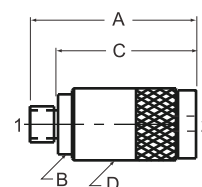
- Push-to-connect
- Precision machined
- Acetal release button
- Captured o-ring seal
- Electroless Nickel plated

Push-to-Connect style fittings ease tubing connection and disconnection without the use of tools. Recommended for use with 95A Durometer Polyurethane tubing, these precision machined fittings are Electroless nickel plated for corrosion resistance. Red Acetal release buttons are standard, contact factory for optional colors.

## Push-to-Connect Straight Connector Fittings

Part Number	A	B Diam.	C	D Diam.	1	2 Tube OD
SF-125PI	.88	.32	.72	.38	10-32 (M)	1/8
SF-156PI	.88	.32	.72	.38	10-32 (M)	5/32

### Push-to-Connect



### Materials

Brass, Electroless Nickel Plating, Acetal, Buna-N Seals

### Ordering Information

- Standard quantities
  - 25 pcs per bag
  - 100 pcs per box
- Red release button standard; contact factory for optional colors
- 95A Durometer Polyurethane recommended
- Cavity drawing available for **full** cartridge- contact factory
- **Half** cartridge is available for direct installation- contact factory



## Fitting Specifications

### Performance Data

Temperature Range	Operating Pressure	Media
-20° to 160° F -28° to 71° C	Vacuum to 125 psi	Fluids compatible w/ seals

### Flow Rate- Typical

#### Standard Double Barb

Barb Size	Tube ID (PUR)	C <sub>v</sub>	Flow Rate (scfm)	
			50 psi	125 psi
062	1/16	0.06	1.8	4.0
110	5/64 or 2.4mm	0.20	5.2	12.0
140	1/8	0.20	5.2	12.0
170 O-ring	.170	0.28	7.3	16.5
170 Tapered	.170	0.40	10.5	23.5

#### Pneu-Edge®

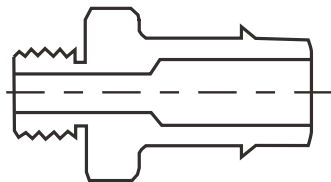
Barb Size	Tube ID (PUR)	C <sub>v</sub>	Flow Rate (scfm)	
			50 psi	125 psi
10	1/16	0.08	2.4	5.5
20	5/64	0.09	2.8	6.8
25	3/32	0.18	5.0	12.0
30	1/8	0.24	6.0	14.5
35	5/32	0.31	7.8	19.0
40	.170	0.48	11.5	27.0
50	3/16	0.60	14.0	33.0
60	1/4	1.07	22.0	52.0
70	5/16	1.62	35.0	82.0
80	3/8	3.40	59.0	140.0

**Additional Recommendation:** Pneu-Edge fittings ensure permanent polyurethane tubing installation without the need for clamps. However, we recommend the use of clamps in applications over 80 psi which also involve heat or vibration.

- All Flow Rates are approximate

## Flow Rate- Atypical

Pneu-Edge® fittings ease installation by offering larger barbs on miniature threads. This configuration lowers the rate of flow. Please refer to the listing below for atypical dimensions and data.



*Barb ID does not necessarily determine flow rate*



*Ten thread sizes available*

Part Number	Tube ID (PUR)	Cv	Flow Rate (scfm) psi	
			50	125
EB35	5/32	.28	7.3	16.5
EB40	.170	.28	7.3	16.5
EB50	3/16	.28	7.3	16.5
EB60	1/4	.28	7.3	16.5
EB40-250	.170	.28	7.3	16.5
EB40-4-28	.170	.48	11.5	27.0
EB50-4-28	3/16	.48	11.5	27.0
EB60-4-28	1/4	.48	11.5	27.0
EB10-M3	1/16	.06	1.8	4.0
EB20-M3	5/64	.06	1.8	4.0
EB25-M3	3/32	.06	1.8	4.0
EB30-M3	1/8	.06	1.8	4.0
EB40-M3	.170	.06	1.8	4.0
EB40-M5	.170	.28	7.3	16.5
ELB35	5/32	.28	7.3	16.5
ELB40	.170	.28	7.3	16.5
ELB50-4-28	3/16	.48	11.5	27.0
ELB10-M3	1/16	.06	1.8	4.0
ELB20-M3	5/64	.06	1.8	4.0
ELB25-M3	3/32	.06	1.8	4.0
ELB30-M3	1/8	.06	1.8	4.0
ELB40-M3	.170	.06	1.8	4.0
ELB40-M5	.170	.28	7.3	16.5
ELB50-M6	3/16	.48	11.5	27.0

Part Number	Tube ID (PUR)	Cv	Flow Rate (scfm) psi	
			50	125
EA-LB40	.170	.40	10.5	23.5
EA-LB50	3/16	.40	10.5	23.5
EA-LB40-SLOT	.170	.40	10.5	23.5
EA-LB50-SLOT	3/16	.40	10.5	23.5
ETB35	5/32	.28	7.3	16.5
ETB40	.170	.28	7.3	16.5
ET50-4-28	3/16	.48	11.5	27.0
ET10-M3	1/16	.06	1.8	4.0
ET20-M3	5/64	.06	1.8	4.0
ET25-M3	3/32	.06	1.8	4.0
ET30-M3	1/8	.06	1.8	4.0
ET40-M3	.170	.06	1.8	4.0
ET40-M5	.170	.28	7.3	16.5
ET50-M6	3/16	.48	11.5	27.0
EA-T40	.170	.40	10.5	23.5
EA-T50	3/16	.40	10.5	23.5
EA-T40-SLOT	.170	.40	10.5	23.5
EA-T50-SLOT	3/16	.40	10.5	23.5



*Consistently sharp barbs*