
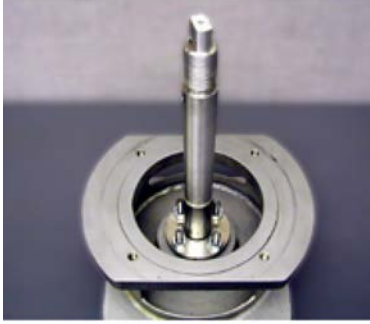





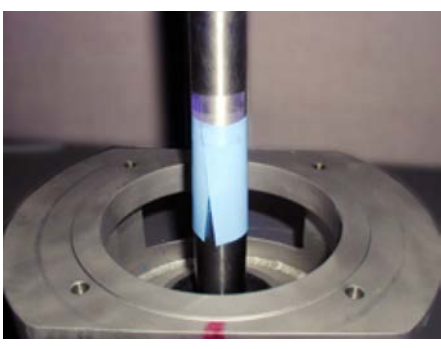



ILLUSTRATION OF TYPICAL idL™ SHAFT SEAL REPLACEMENT

		
<p>Photo 1: Gear reducer (gray) mounted to cut away piece (silver) of the automatic strainer.</p>	<p>Photo 2: Internal view of the strainer with gear reducer removed and the backwash arm shaft and original packing and packing gland visible.</p>	<p>Photo 3: Internal view of the strainer with the original packing and packing gland removed.</p>
		
<p>Photo 4: The backwash arm shaft is cleaned with fine emery cloth.</p>	<p>Photo 5: The gasket seal is installed over the backwash arm shaft.</p>	<p>Photo 6: The quad ring seals and bushing on top of the idL™ bearing housing before assembly and installation.</p>
		
<p>Photo 7: The seals and bushing have been assembled into the idL™ bearing housing and the white PTFE O-ring is installed.</p>	<p>Photo 8: The blue plastic shim, taped and lubricated to the backwash arm, should just cover the shoulder and help ease the quad rings over the shoulder of the backwash arm shaft.</p>	<p>Photo 9: The completed idL™ bearing assembly is installed over the backwash arm shaft.</p>

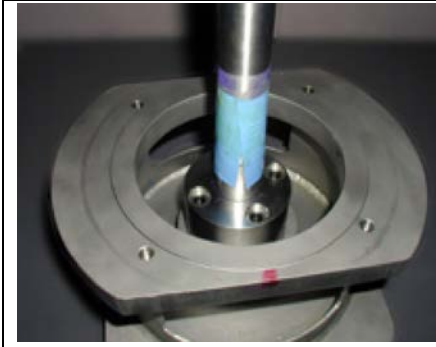


Photo 10: The idL™ bearing assembly in place.



Photo 11: Two allen head cap screws hold the idL™ bearing seal in place.



Photo 12: After the idL™ bearing seal is in place, the gear reducer is replaced on the top of the strainer.

North America — HQ

44 Apple Street
Tinton Falls, NJ 07724

Toll Free: (800) 656-3344
(North America only)

Voice: +1 732 212-4700

Brazil

Av. Julia Gaioli, 474 – Bonsucesso
07251-500 – Guarulhos
Brazil

Voice: +55 11 2465 8822

Singapore

4 Loyang Lane #04-01/02
Singapore 508914

Voice: +65 6825 1668

For more information,
please e-mail us at
filtrationinfo@eaton.com
or call 732-212-4700.

Europe/Africa/Middle East

Auf der Heide 2
53947 Nettersheim, Germany

Voice: +49 2486 809 0

China

No.7, Lane 280, Linhong Road
Changning District,
Shanghai 200335, China

Voice: +86 21 5200 0422

WARRANTY

All products manufactured by Seller are warranted against defects in material and workmanship under normal use and service for which such products were designed for a period of eighteen (18) months after shipment from our factory or twelve (12) months after start-up, whichever comes first. OUR SOLE OBLIGATION UNDER THIS WARRANTY IS TO REPAIR OR REPLACE, AT OUR OPTION, ANY PRODUCT OR ANY PART OR PARTS THEREOF FOUND TO BE DEFECTIVE. SELLER MAKES NO OTHER REPRESENTATION OR WARRANTY, EXPRESS OR IMPLIED, INCLUDING, BUT NOT LIMITED TO, ANY IMPLIED WARRANTY OF MERCHANTABILITY OR FITNESS FOR A PARTICULAR PURPOSE. WE SHALL NOT BE LIABLE FOR CARTAGE, LABOR, CONSEQUENTIAL DAMAGES OR CONTINGENT LIABILITIES. OUR MAXIMUM LIABILITY SHALL NOT IN ANY EVENT EXCEED THE CONTRACT PRICE FOR THE PRODUCT.